



PRODUCT PORTFOLIO –
ARCHITECTURAL AND CONSTRUCTION

ALUK[®]



GLOBAL BUSINESS WITH A LOCAL FOCUS

AluK is a leader in the design and engineering of a range of aluminium building systems, combining years of experience in the development of innovative solutions that improve our living and working environments. AluK delivers not only the highest performance products but also the service and support that facilitate successful projects.

Aluminium is at the heart of all our products and offers a high quality, sustainable foundation for our curtain walling, window and door systems.

These have been specified and installed in some of the world's most prestigious buildings across the commercial, public and residential sectors.

Through the continual development of new performance and aesthetic enhancing designs, and providing the technical support that specifiers demand, we have become the solutions provider of choice for many of the world's leading building designers.

» CONTENTS

| | |
|---------------------------------------|-------|
| Global business with a local focus | 2-3 |
| Innovation in design and manufacture | 4-5 |
| Technical expertise and support | 6-7 |
| Curtain walling systems | 8-9 |
| SL52 curtain walling system | 10 |
| SG52 curtain walling system | 11 |
| Ground floor treatment systems | 12-13 |
| GT55 TB ground floor treatment system | 14 |
| GT55 NI ground floor treatment system | 15 |
| Window systems | 16-17 |
| 72BW window system | 18 |
| 72BW HI window system | 19 |
| 58BW window system | 20 |
| 58BW ST window system | 21 |
| Door systems | 22-23 |
| 72BD door system | 24 |
| 72BD HI door system | 25 |
| 58BD door system | 26 |
| 58BD+ door system | 27 |
| GT55 TB door system | 28 |
| GT55 NI door system | 29 |
| Sliding and folding door systems | 30-31 |
| BSC94 sliding door system | 32 |
| BSC70 sliding door system | 33 |
| BSF70 folding door system | 34 |
| BSF70 HD folding door system | 35 |
| Design considerations | 36-37 |
| Case Studies | 38-39 |

INNOVATION IN DESIGN AND MANUFACTURE



'Delivering high performance systems fit for today's modern building designs'

For more than sixty years round the world, and more than twenty years in the UK, AluK has been at the forefront of the design of aluminium curtain walling, window and door systems. We combine unique and innovative solutions that deliver high performance, with the aesthetic appeal demanded by today's modern building designs.

We pride ourselves in developing and delivering innovative building solutions that enhance lives, whilst minimising our impact upon the environment. Our curtain walling, window and door

systems have been rigorously tested in the UK and beyond to ensure that they meet and exceed current standards. All our products are quality assured and we maintain ISO 9001 and ISO 14001 certification.

Service and support has been the key to our success across the globe, providing a complete package of technical support that our customers can rely upon to make their project a success. We have a global network of technical teams on hand to offer detailed support, ranging from bespoke design to

thermal calculations and best practice advice, wherever your project is based.

We provide a complete range of training courses for our partners over a range of locations across the UK. We also hold regular training courses to keep our partners up to date with technical advances and new product developments, as well as to ensure that we offer our customers consistent and quality fabrication and installation of our products, every time.





TECHNICAL EXPERTISE AND SUPPORT

► SPECIFICATION SUPPORT

AluK offers a complete technical and design service to support our customers. Our experienced and knowledgeable team is available to offer expert advice across a range of subjects including design, performance, fabrication, installation and maintenance. It is our goal to ensure that we provide the highest standards in service to match those which we achieve in the design and engineering of our products, offering complete package that our customers can rely upon.

Design support

Our technical team can support your project by providing design and technical advice as well as structural, thermal and acoustic calculations and test data. Their expertise in the design and development of curtain walling, window and door systems, supported by qualifications in façade engineering and mechanical and structural engineering, ensure that our customers get the best advice for their project.

Online technical support

Our website provides a wide range of technical information for review and download. Customers can register to download CAD drawings, BIM objects, reference images and full technical information for all of our products. We are also able to provide customers with a complete digital library of technical data via direct transfer or on portable digital media if required.

With dedicated sales and specification managers you can be assured that you will always be able to get the answers that you need, when you need them.

► INNOVATIVE BUILDING SYSTEMS

As specialists in the use of aluminium in design and engineering, AluK is a leader and innovator in delivering not only the performance required by modern buildings but also the aesthetic design and functionality that sets our products apart in the market.

Behind the aesthetic appeal of our profiles is technology that we have developed to deliver high performance at every level. Our unique designs have been developed by some of the industry's leading glazing and façade experts, with technology that delivers acoustic, energy and security benefits.

► WHY ALUMINIUM?

All of our building systems use aluminium as their core material, which offers an inherent strength necessary for building projects. Aluminium is known for being lightweight, durable, and low maintenance, while also aiding the high performance of our systems due to its immunity to UV and fire resistance.

Up to 90% of all aluminium used in construction is recycled, using 95% less energy to manufacture than its primary production. This makes it one of the most sustainable construction materials available, reducing carbon emissions and contributing to the lifecycle costing of a building - without any deterioration in quality.

► BIM

AluK is one of the first UK manufacturers to provide a comprehensive selection of COBie-compliant BIM objects, providing the information you need during the design and construction of your project.

Our team has been trained by BRE to achieve an Accredited Professional status for BIM and the principles of BS1192, and our own in-house BIM Coordination enables us to provide expertise in modelling facades and the creation of project-specific content.



► ACCREDITATIONS

All of our aluminium building systems are meticulously tested in both our internal and 3rd party accredited facilities, where they are assessed on a range of performance criteria including: water, wind and airtightness; durability; thermal insulation; and acoustic insulation. They meet and exceed industry standards, including PAS24 and 'Secured by Design', demonstrating their reliability and safety and security.



CURTAIN WALLING SYSTEMS

AluK curtain walling systems have been specified and installed in some of the world's most prestigious buildings. Our unique lightweight solutions offer building designers the flexibility to create the structures they desire, whilst maintaining the performance and functionality demanded by modern buildings.

Combining strong but lightweight aluminium profiles with glazed sections, our systems can be faceted, curved or angled to create the desired finish, whilst offering maximum light transmission into the building with minimum profile sightlines.

All profiles are thermally broken to ensure maximum performance and systems include a wide range of features to provide complete design flexibility. These include a capped system and a structurally bonded system, a range of doors, multiple drainage methods and face caps and a multitude of opening configurations including Parallel Opening Vent (POV), Tilt Before Turn (TBT), Side Hung and Top Hung.

AluK curtain walling systems can be built to accommodate large single span atriums using our large range of box sizes from 50mm to 350mm, offering large expanses of uninterrupted glazing.

Our experienced technical team is available to support developers and specifiers at every step of the way, from design to installation, and with complete design flexibility we can accommodate the look that you want to achieve.



➤ SL52 CURTAIN WALLING SYSTEM

The SL52 Curtain Walling System is a flexible capped solution designed to offer high performance. Our aluminium curtain walls enable specifiers to create impressive facades that not only enhance the aesthetics of a building but also provide the functionality and performance required to meet and exceed current standards.

Design Features

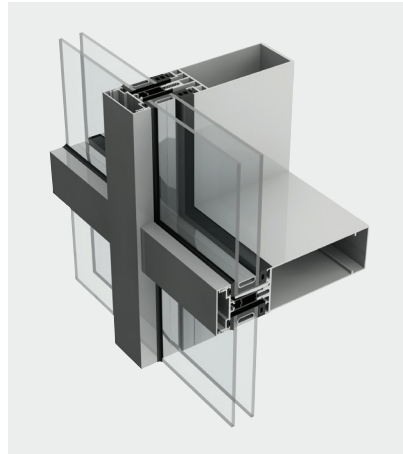
- 52mm wide capped high rise curtain walling system
- Glass panel loads of up to 400kg
- Can be faceted, curved or angled
- Various drainage methods including mullion and zonal
- Wide range of external face cap designs
- Fully integrated opening vent options including, Tilt Before Turn, Top Hung, Side Hung
- Large range of box sizes to optimise small to large spans of glazing
- Fully tested to CWCT Sequence B (Dynamic)

Options

- Glazing infill range from 6mm - 50mm
- Fully integrates with all AluK window and door ranges
- Available in single or dual colour option, polyester powder coating and anodised finishes

Configurations

- Flexible design allows SL52 to be tailored to suit your project needs
- Multiple construction options including traditional shear block T-connectors, front loaded transoms with sprung T-connectors
- Concealed mullion drainage options and visible zonal drainage option
- Varying mullion depths allowing a wide range of achievable structural values



➤ SG52 CURTAIN WALLING SYSTEM

The SG52 Curtain Walling System is a flexible and high performance structurally bonded system, enabling sleek profiles and stunning expanses of glazing. This system combines form and functionality to exceed current industry standards and create impressive façades fit for modern construction.

Design Features

- Structurally bonded external finish
- 52mm high rise curtain walling system
- Can be faceted, curved or angled
- No projecting caps, flush finish with glazing
- Fully integrated vent options including Parallel Opening Vent, Tilt Before Turn and Top Hung
- Large range of box sizes to optimise small to large spans of glazing
- Fully tested to CWCT Sequence B (Dynamic)

Options

- Glazing and infill range from 32 - 40mm as standard
- Fully integrates with AluK window and door ranges
- Available with polyester power coating and anodised finishes

Configurations

- Flexible design allows SG52 to be tailored to suit your project needs
- Multiple construction options including traditional shear block T-connectors, front loaded transoms with sprung T-connectors
- Varying mullion depths allowing a wide range of achievable structural values





GROUND FLOOR TREATMENT SYSTEMS

AluK offers a complete ground floor treatment solution for hospitality, education, retail and residential sectors where low rise framing is required. Through the option of thermally broken screening, the AluK system provides a high performance solution that is versatile and adaptable, providing designers with the look and performance they require. The system is available insulated or non-insulation for display windows in applications such as shopping centres.

The system includes non-thermal and thermally insulated solutions for commercial doors and screening. Both door options are designed for high traffic commercial environments, utilising anti-finger traps and slim profiles and have been tested over 500,000 cycles. The screening is made in a ladder frame construction for ease of installation.

Combining performance, modern profiles, large expanse glazing and a wide range of options and finishes, designers can create the look they wish to achieve, whether their project is low or medium rise.

➤ GT55 TB GROUND FLOOR TREATMENT SYSTEM

A versatile and flexible solution for a range of applications including shop fronts, entrances and ground floor framing the GT55 TB aluminium ground floor treatment system has been designed to offer high levels of performance through thermally broken screening. The system also includes an integrated range of high-traffic, anti-finger trap doors suitable for single storey applications.

Design Features

- 110mm frame depth to accommodate varying types of applications
- Slim 55mm profile width for increased glazing and light transmission
- Fully compatible with other AluK systems
- Mullion options
- Wide glazing pocket for easy site glazing
- Can accommodate 6mm - 32mm sealed units for thermal and acoustic performance

Options

- Available in single or dual colour option, polyester powder coating and anodised finishes
- Pocket or Bead glazed for ease of site glazing

Configurations

- Flexible design allows GT55 TB to be tailored to suit your project needs
- Integrated doorsets



GROUND FLOOR TREATMENT SYSTEMS

➤ GT55 NI GROUND FLOOR TREATMENT SYSTEM

The GT55 NI aluminium ground floor treatment system is a non-insulated product for internal use in applications such as shopping centres, medical centres and other areas that require significant partitioning without the need for thermal insulation. The system offers all the same benefits as the GT55 TB system but without the thermal insulation and thus at a reduced price point.

Design Features

- Pocket or Bead glazed for ease of site glazing
- 110mm frame depth to accommodate varying types of applications
- Slim 55mm frame profile for increased glass appearance
- Fully compatible with other AluK systems

Options

- Can accommodate 6mm - 32mm sealed units for acoustic performance
- Available in single colour, polyester powder coating and anodised finishes

Configurations

- Flexible design allows GT55 NI to be tailored to suit your project needs
- Integrated doorsets





WINDOW SYSTEMS

AluK is a leader in the design and engineering of aluminium windows. Through our continual innovation we have developed some of the most aesthetic and performance driven aluminium windows products available in the UK and across the world.

We provide a complete range of aluminium window systems to suit the needs of any project, commercial or residential, providing the flexibility, style and performance that designers are looking for when specifying glazing solutions. Manufactured to the highest standards, our aluminium windows are inherently strong, lightweight and sustainable.

Our unique window profiles have been designed to meet and exceed the performance standards expected in modern building design, whilst also providing the aesthetic appeal designers are looking for. A range of design features and functions enable specifiers to choose the aluminium window system that suits the needs and design of their project, whilst being assured of the quality and performance that is integral to all our innovative building systems.

AluK aluminium window systems are available in Casement, Tilt before Turn, Parallel Opening Vent, Fully Reversible and Steel Replacement window formats, as well as varying levels of performance and frame profiles, providing the configuration to meet your project requirements. We are also able to work with specifiers to provide bespoke architectural window and glazing solutions for particular projects, where required.

➤ 72BW WINDOW SYSTEM

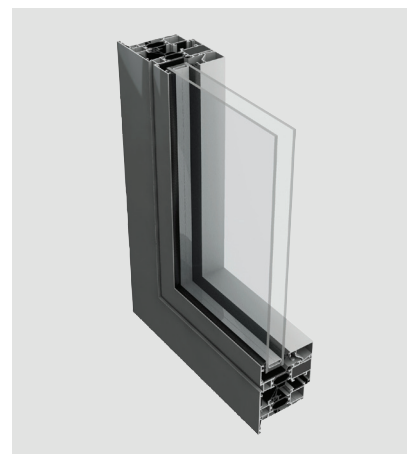
The 72BW is a three chamber aluminium window and door system that offers high performance alongside a wide range of adaptable features, formats and configurations to meet the demands of your project.

Design Features

- Three chamber window system for strength and performance

Options

- Windows can be manufactured to suit any configuration, style and design
- Full range of high quality hardware available
- Glazing depth from 8mm - 60mm
- Wide range of security and safety mechanisms to fully customise your window functionality
- Available in single or dual colour option, polyester powder coating and anodised finishes



Configurations

- Top Hung and Side Hung (Open Out)
- Side Hung and Bottom Hung (Open In)
- Tilt/Turn
- Fully reversible



➤ 72BW HI WINDOW SYSTEM

This three chamber aluminium window and door system has been designed to offer the highest levels of performance, alongside the flexibility to tailor configurations to your requirements.

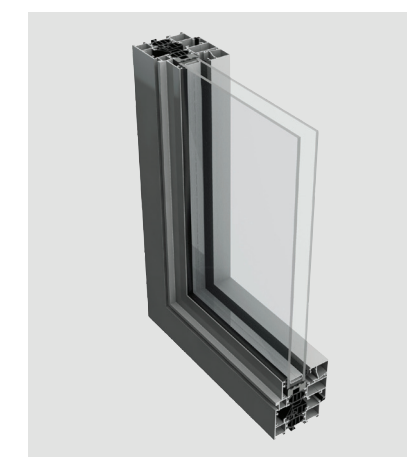
The 72BW HI aluminium window and door system incorporates our patented Spidertechnology® ABS strips that allow you to achieve high thermal insulation. The system has been certified under the Secured by Design scheme and incorporates high security multipoint-locking systems and a range of window and door furniture.

Design Features

- Three chamber high performance window system for exceptional stability
- Both aluminium and PVC groove hardware available
- Wide range of styles and configurations to choose from
- A variety of finishes and detailing are available to suit your project
- Customisable components to reach desired thermal performance specification
- All certified under Secured by Design scheme

Options

- EPDM gasket seals can be inserted to create a multi-chambered "insulation block" between frame and vent profile and prevent localised heat convection
- A continuous insulation strip in PE foam can be introduced between the glazing and aluminium profile during glazing to significantly reduce heat loss
- Full range of hardware and security locking mechanisms available
- Glazing sizes of 8mm - 60mm
- Available in single or dual colour options including anodised finishes



Configurations

- Side Hung and Bottom Hung (Open In)
- Tilt/Turn
- Vertical and Horizontal Pivots
- Parallel opening vents
- Lifetime Homes (LTH)





➤ 58BW WINDOW SYSTEM

The 58BW window system is the perfect choice for residential or commercial projects, offering a cost effective, high performance solution in a wide range of configurations and formats to suit your building design. The window system is available in Top Hung, Side Hung, and Steel Replacement formats with a range of glazing and hardware options. With clean lines and advanced functionality, this superior window and door system offers you the choice and flexibility to meet your needs.

Design Features

- Accommodates 24mm - 40mm glazing units for thermal and acoustic performance
- Windows available in internally or externally glazed options
- Flat, chamfered or Ovolo details to achieve contemporary or traditional appearance
- 58mm or 70mm frame depth to accommodate varying types of applications
- Unique polyamide thermal break design to improve thermal performance
- Certified under Secured by Design scheme
- Multi-point locking mechanisms for security
- Cloaking feature conceals lock and prevents any access to locking points

Options

- Dedicated fixing straps for ease of installation
- Available in single or dual colour option, polyester powder coating and anodised finishes
- Internal or external glazing beads
- Integrated deep head profiles for integration of trickle ventilation
- Accepts a full range of restrictors and access control devices
- Available as a standard option or with PAS24 upgrade



Configurations

- Top Hung and Side Hung (Open Out)
- Side Hung and Bottom Hung (Open In)
- Tilt/Turn
- Fully reversible

➤ 58BW ST STEEL REPLACEMENT WINDOW SYSTEM

The 58BW ST window system provides an ideal solution for the replacement of existing steel windows. The system is available in a range of styles and can be top, bottom or side hung to meet the needs of your project. The design replicates the narrow sight lines associated with steel windows whilst providing superior performance and security.

Design Features

- Slim sightlines to match existing steel windows
- Unique polyamide thermal break design to improve performance
- Accommodates standard hardware including friction stays and shoot bolt locking and safety features
- Tested to PAS 24 and certified under the Secured by Design scheme

Options

- Accommodates 24mm - 32mm glazing units for thermal and acoustic performance
- Casement clips available for easy fit and removal of dummy vents
- Dedicated fixing straps for ease of installation
- Available in single or dual colour option, polyester powder coating and anodised finishes
- Internally beaded option for ease of site glazing on high-rise applications
- Integrated deep head profiles for ease of trickle ventilation



Configurations

- Top, Bottom, Side Hung and Outward Opening
- Fixed Lights





DOOR SYSTEMS

AluK commercial aluminium doors seamlessly integrate with our aluminium window and curtain walling systems to provide a complete design solution for specifiers. A comprehensive range of door options are available to suit many applications, from commercial buildings to hotels, schools, hospitals and residential properties.

Safe and very secure, AluK aluminium door systems include high quality multi-point locking mechanisms and a range of other security features. Combined with the inherent strength of aluminium, our door systems are some of the most secure available on the market.

We have developed a diverse range of aluminium doors to suit every building style, whether traditional or modern. Each door system has its own characteristics, offering varying levels of performance, profile depth or application.

Our aluminium doors are available in a complete range of colours and finish, both single and dual aspect, as well as inward or outward opening, a range of glazing sizes and a low threshold option to comply with Part M of the Building Regulations.

Our goal has been to provide specifiers with the choice and design of doors they require to meet the needs of their project, whilst also ensuring the highest level of security and performance.

72BD DOOR SYSTEM

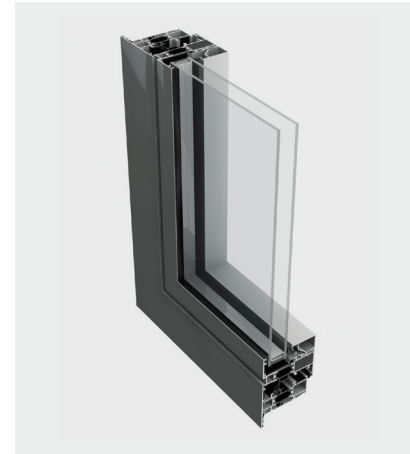
The 72BD is a three chamber aluminium window and door system that offers high performance alongside a wide range of adaptable features, formats and configurations to meet the demands of your project.

Design Features

- Three chamber high performance door system
- Both aluminium and PVC groove hardware available
- Certified under Secured by Design scheme
- Tested to PAS 24 and certified under the Secured by Design scheme

Options

- Doors can be manufactured to suit any configuration, style and design
- Full range of high quality hardware available
- Glazing sizes from 25mm - 65mm
- Wide range of security locking mechanisms to fully customise your door
- Available in single or dual colour option, polyester power coating and anodised finishes



Configurations

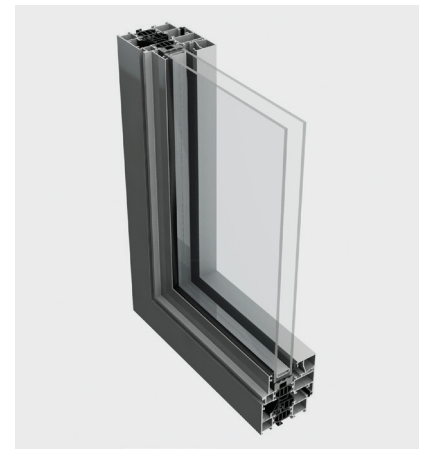
- Single Doors (Open In)
- Single Doors (Open Out)
- Double Doors (Open In)
- Double Doors (Open Out)



72BD HI DOOR SYSTEM

Our 72BD HI aluminium doors offer the ultimate combination of performance and security, bringing together unique design with advanced technology to create a door that is both flexible in specification and built to last.

This leading door system is a three chamber thermally broken product and incorporates our patented Spidertechnology® ABS strips, which allow you to achieve the highest thermal insulation without expensive system changes. Our aluminium doors have been certified under the 'Secured by Design' scheme and incorporates high security multipoint-locking systems and a range of customisable door furniture.



Design Features

- Three chamber high performance door system
- Both aluminium and PVC groove hardware available
- Certified under Secured by Design scheme
- Tested to PAS 24 and certified under the Secured by Design scheme

Options

- EPDM insulation can be inserted to create a multi-chambered 'insulation block' between frame and vent profile and prevent localised convection
- A continuous insulation strip in PE foam can be introduced between the glazing and aluminium profile during glazing to significantly reduce heat loss
- Full range of hardware and security locking mechanisms available
- Glazing sizes of 25mm – 65mm
- Available in single or dual colour options including anodised finishes

Configurations

- Single Doors (Open In)
- Single Doors (Open Out)
- Double Doors (Open In)
- Double Doors (Open Out)





➤ 58BD DOOR SYSTEM

The 58BD door system is the perfect choice for residential or commercial projects, offering a cost effective, high performance solution in a wide range of configurations and formats to suit your building design. With clean lines and advanced functionality, this superior door system offers you the choice and flexibility to meet your needs.

The 58BD door system has been designed to offer a high performance, narrow profile solution that has the range and flexibility to suit most projects, with a complete range of colours and finishes. Certified under the Secured by Design scheme, and meeting all relevant standards, this competitively priced door system offers complete choice and flexibility.

Design Features

- 58mm or 70mm frame depth to accommodate varying types of applications
- Unique polyamide thermal break design to improve thermal performance
- Tested to PAS 24 and certified under Secured by Design scheme
- Door system with unique Polyamide Euro groove design

Options

- Available as a standard door option with PAS24 upgrade
- Multi point locking mechanisms for enhanced security
- Accommodates 24mm - 44mm glazing units for thermal and acoustic performance
- Dedicated fixing straps for ease of installation
- Low threshold door option to comply with Part M – Building Regulations
- Available in single or dual colour option, polyester powder coating and anodised finishes
- Integrated deep head profiles for ease of trickle ventilation



Configurations

- Single Doors (Open In)
- Single Doors (Open Out)
- Double Doors (Open In)
- Double Doors (Open Out)
- Lifetime Homes (LTH)

➤ 58BD+ DOOR SYSTEM

The next generation in our residential door range combines very clean lines with superior protection from the elements. This three chamber system has been designed to offer the highest levels of performance, with a maximum vent weight of 150kg and improved glazing thickness. With a choice of configurations and options to fit your project, the 58BD+ system's door sash is flush with the internal and external outer frame surfaces.

This system is PAS 24 tested and includes high security multipoint-locking systems and a range of door furniture.

Design Features

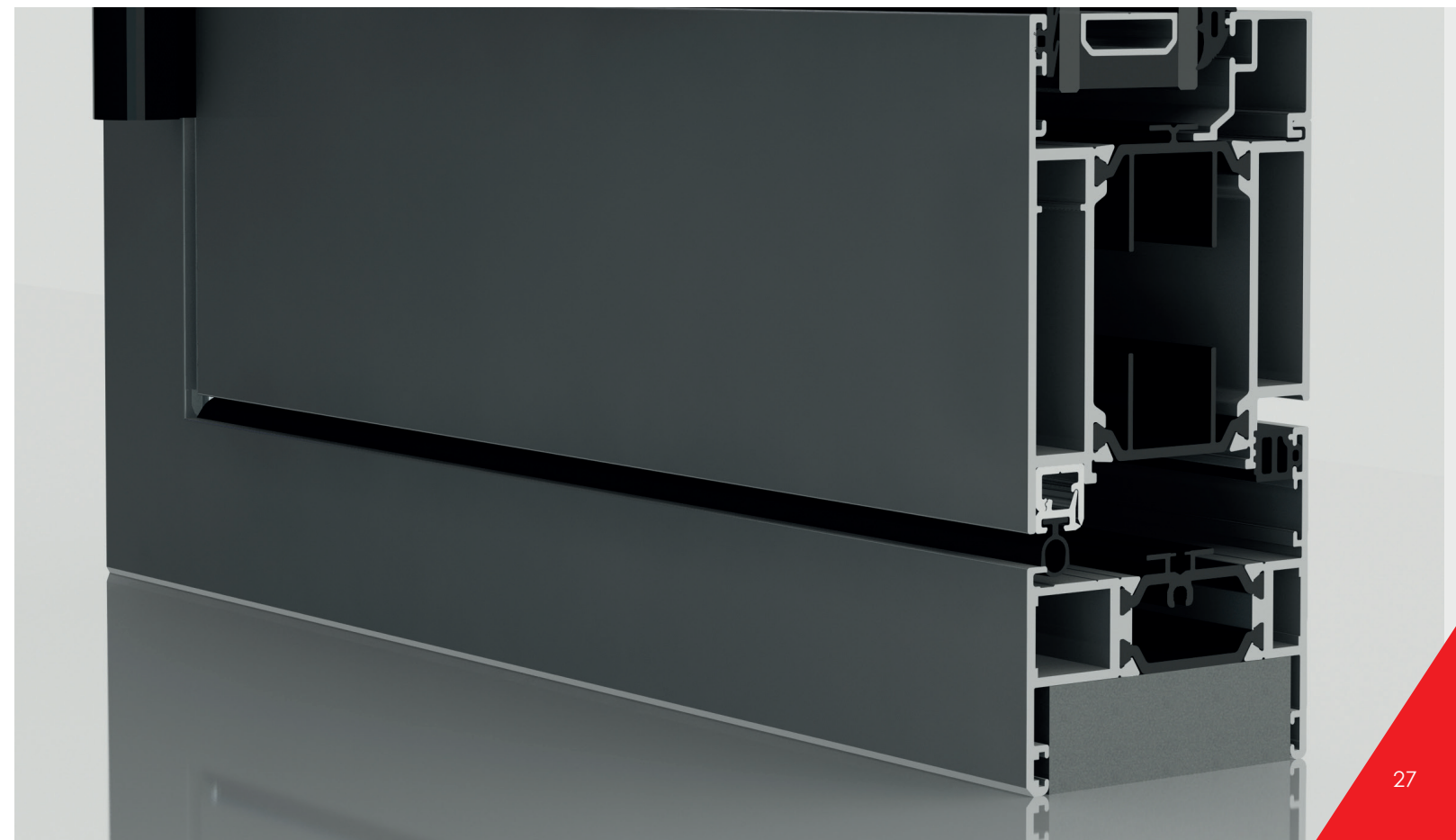
- Slim sightlines of 109mm
- Green Guide Rating A
- Max leaf weight of 150kg
- The door sash is flush with the internal and external outer frame surfaces
- Fully tested to PAS 24
- 58mm - 70mm frame depth matching other AluK door and window systems
- Glazing widths of 24mm – 40mm

Options

- Available in single and dual colour
- Feature, ovolo or square frame options
- Choice of square or chamfered bead

Configurations

- Open In Single Door
- Open Out Single Door
- Open In Double Door
- Open Out Double Door





➤ GT55 TB THERMALLY BROKEN DOOR SYSTEM

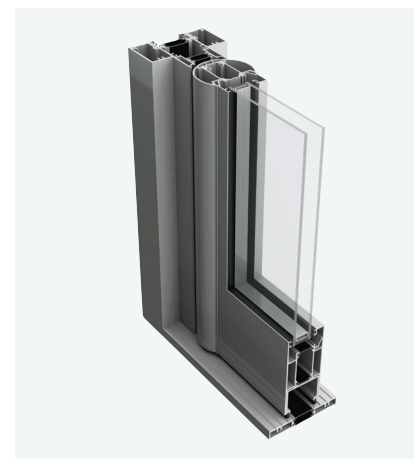
The GT55 TB commercial door system provides the ultimate combination of security and performance. It also includes thermal break profiles for improved performance. It is ideal for a range of heavy duty commercial and public sector applications including offices, hospitals, schools, warehousing and other industrial applications.

Design Features

- Successfully tested to PAS24 with standard, entry control and panic hardware
- Thermal break technology for enhanced thermal performance
- Unique security and safety features
- Structurally enhanced door framing
- Fully glazed, commercial swing door
- Low Threshold
- Tested to PAS 24 and certified under Secured by Design scheme

Options

- Available with a full range of security and customisable hardware
- Electronic and manual access systems are easily integrated
- Available in single or dual colour option, polyester powder coating and anodised finishes
- Anti-finger trap stiles option
- DDA compliant overhead closer option



Configurations

- Single Doors (Open In)
- Single Doors (Open Out)
- Double Doors (Open In)
- Double Doors (Open Out)

➤ GT55 NI NON-INSULATED DOOR SYSTEM

The GT55 NI commercial door system provides the ultimate in security, certified to LPS 1175 (SR2) and by Secured by Design at a competitive price point. It does not include insulation and thus is ideal for a range of high traffic applications in the commercial and public sector including retail outlets, offices, hospitals, schools, warehousing as well as other industrial applications.

Design Features

- Fully glazed, commercial swing door
- Unique security and safety features
- Structurally enhanced door framing
- Integrated with GT55 ground floor treatment system

Options

- Available with a full range of security and customisable hardware
- Electronic and manual access systems easily integrated
- Available with single colour, polyester powder coating and anodised finishes
- SBD LP51175 & PAS 24 compliant



Configurations

- Single Doors (Open In)
- Single Doors (Open Out)
- Double Doors (Open In)
- Double Doors (Open Out)



SLIDING AND FOLDING DOOR SYSTEMS

Bringing together internal and external environments is a trend that has seen the development of a wide range of products that enable the opening of large expanses of a building. AluK has led the way in designing a complete range of folding and sliding door options that allow specifiers to design buildings that engage with their environments.

However, it is also essential that these products perform to the standards expected and deliver comfortable living and working environments. The flexibility that these innovative systems offer in combining indoor and outdoor life enables building occupants to live their lives the way they choose.

Our systems combine the strength and lightweight properties of aluminium with form and function of the highest standard. Reliability and security are key drivers in the design of any sliding or folding door system. AluK systems have been rigorously tried and tested to exceed many standards and most are certified under the 'Secured by Design' scheme for security and exceed severe exposure categories for weather tightness.

Combining narrow profiles and high thermal performance, our systems offer wide expanses of glazing that allow natural light to flood into rooms, whilst maintaining internal temperatures and weather tightness when closed. Through a wide range of standard and optional features we are able to meet the needs of specifiers and designers in achieving the right look and performance for their project.





➤ BSC70 SLIDING DOOR SYSTEM

Versatile and robust, the BSC70 aluminium in-line sliding door system combines narrow sight lines, thermal performance and reliable, secure hardware. Available in a wide range of colours and finishes, this stylish system has been rigorously tested for weather tightness and is suitable for a range of applications including retail, residential, hospitality and commercial.

Design Features

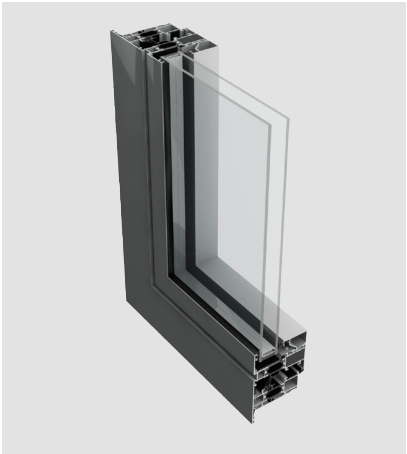
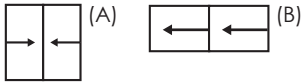
- Reinforced interlock options
- 70mm frame depth
- Narrow profile offering minimal sight lines (42mm interlock)
- Wrap around glazing
- Stainless steel wheels ensures smooth and consistent operation
- Multi-point locking hardware
- Two pane sliding door or window
- In-line track system
- Full range of suited hardware available
- Maximum glazing 28mm

Options

- Available in single or dual colour option, polyester powder coating and anodised finishes

Configurations

- (A) Two pane sliding door
- (B) Two pane sliding window



➤ BSC94 SLIDING DOOR SYSTEM

The BSC94 aluminium sliding door is a multi-configuration in-line system that allows you to specify and design the most suitable solution for your project. The system is available with fixed and sliding panels, as well as single, double and triple track options. Outstanding thermal performance and the highest quality fittings ensure reliable and comfortable operation.

Design Features

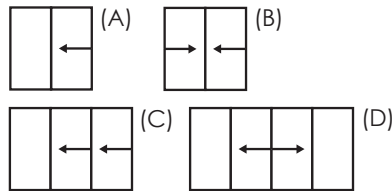
- Three chamber in-line slide or lift and slide system
- Up to six panel sliding configurations
- Thermally enhanced extrusions incorporating glass fibre reinforced polyamide strips
- Robust and durable design allowing up to 400kg panel weight for both in-line sliding and lift and slide configurations

Options

- Accepts 20mm - 31mm Double Glazed Units
- In-line or Lift and Slide
- Single, Double or Triple Track options
- Available in single or dual colour, polyester powder coating and anodised finishes

Configurations

- (A) One Panel Sliding
- (B) Two Panel Sliding
- (C) Three Panel Sliding
- (D) Four Panel Sliding
- Fixed panels
- Single, Double or Triple Track



BSF70 FOLDING SLIDING DOOR SYSTEM

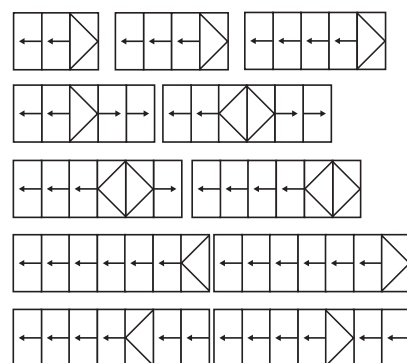
Versatile and flexible, the market leading BSF70 aluminium folding door system is available in a wide range of configurations to create the look you desire. Multiple doors can be combined with open-in or open-out options, in a variety of styles to create a wide expanse of opening. The narrow profile ensures that maximum glazing is achieved, flooding rooms with light.

Design Features

- Internally beaded with a softline or square detail to all external doors and panels
- Four stainless steel wheels per carriage ensures smooth and consistent operation
- Unique, flush T-handle that allows maximum door opening and squared stacking panels
- Tested to PAS 24 and certified under the Secured by Design scheme
- Glazing sizing range of 24mm – 40mm

Options

- Doors and panels can be used in a variety of configurations, style and design
- All configurations are available in both open-in and open-out options
- Available in single or dual colour option, polyester powder coating and anodised finishes
- Chamfered and square bead options
- Low threshold option which can be configured to achieve DDA and Part M compliance



Configurations

The BSF70 folding sliding door system is available in a wide range of configurations as demonstrated. Panels can be stacked inside or outside, to the left or right, or split stacked on both sides.



BSF70 HD FOLDING SLIDING DOOR SYSTEM

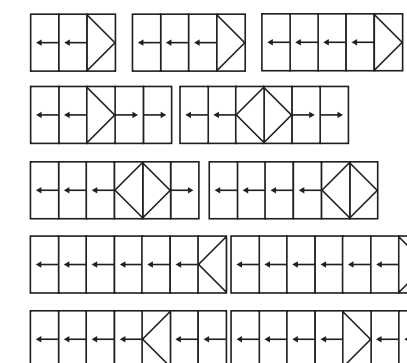
The BSF70 HD is an innovative folding door system offering incredible acoustic and thermal performance combined with contemporary, sleek profiles. The flexible design allows additional panels with open-in or open-out options, while an alignment pin has been built in to ensure accurate and permanent positioning of the doors for easier installation.

Design Features

- Each panel can hold a glass load of up to 130 Kg
- Internally beaded with a softline or square detail to all external doors and panels
- Four stainless steel wheels per carriage ensures smooth and consistent operation
- Unique, flush T-handle that allows maximum door opening and squared stacking panels
- Tested to PAS 24 and certified under Secured by Design scheme
- Glazing sizing range of 24mm – 40mm

Options

- Doors and panels can be used in a variety of configurations, style and design
- All configurations are available in both open-in and open-out options
- Available in single or dual colour option, polyester powder coating and anodised finishes
- Chamfered and square bead options
- Low threshold option which can be configured to achieve DDA and Part M compliance



Configurations

The BSF70 HD folding sliding door system is available in a wide range of configurations. Panels can be stacked inside or outside, to the left or right, or split stacked on both sides.



DESIGN CONSIDERATIONS

When specifying window, door and curtain walling systems there are a number of key design considerations should be addressed. Our Specification team is available to discuss any of these aspects to ensure the smooth specification, manufacture and installation of AluK building systems.

1. System essentials

Ensuring that the basic requirements for any system are considered from the outset is essential in delivering a fit for purpose solution. Here are some of the essential elements to consider:

- Ventilation Requirements
- Safety Considerations
- Fenestration Configuration
- DDA Compliance
- Cleaning
- Security Measures

Our building systems offer complete flexibility in design and configuration to ensure that whatever your project requirements we can provide a system that meets your needs.

2. System performance

When considering the specification of a window, door or curtain walling system the required performance is a key factor that will determine the final specification. There are a range of performance criteria that should be considered:

- Thermal Performance
- Acoustic Performance
- Weather Tightness
- Environmental Conditions
- System Usage

AluK offers a range of systems to meet and exceed current performance standards and provide specifiers with the optimum system and performance for their project.

3. Finishings and fixings

The choice of the right finish, colour and hardware for your project will have an impact upon the final aesthetics and security of the building. When specifying these you should consider:

- External Environment
- Planning, Security Legislation and Design Requirements
- Style of Fittings and Hardware
- Warranties and Guarantees
- Anodised or Powder Coated Surface Texture and Standard or Special Colour
- Marine, High Humidity, Industrial and Environmental

AluK offers a range of systems to meet current performance standards and provide specifiers with the right system and performance for their project.

4. Features

Determining the features required in a system will shape the final specification. Things to consider include:

- Structural Loads
- Movement Considerations
- Interface and Integration
- Glazing Requirements
- Infill Support and Weight
- Air Seals and Drainage
- System Configuration

Our Specification Design team is available to guide you through the technical requirements of your system if required, helping our partners to specify solutions that provide optimum performance.

5. Testing and certifications

Testing prior to installation and ensuring that your specified system meets current and future standards is an important aspect of any project. Elements to consider include:

- Performance Standards
- Security Certification
- Equality Act (DDA) Compliance
- Bespoke System Testing
- Integration with other Systems

Our in-house Research and development team have the expertise and equipment to test and design our systems, ensuring that both standard and bespoke solutions are fit for purpose and answer the needs of your project.

6. Installation

Ensuring that a specified system can be fitted and installed effectively will have significant impact upon a project if all the considerations are not taken into account:

- Fixing
- Site Access and Installation
- Logistics
- On-Site Programme
- Planning

Our Project Management team can support specifiers to ensure that our systems are installed correctly and effectively, wherever the project.

All our partners and installers go through a rigorous training programme gaining AluK approved installer certification.

CASE STUDIES



Alex House

Powell Dobson Architects

University of Wales Trinity Saint David in Swansea has invested £8 million into the refurbishment, restoration and extension of the Grade II listed former Central Library building to create the new Institute for Sustainable Design. Devised by Powell Dobson Architects, the development incorporates a stunning twin wall façade featuring AluK curtain walling systems, complementing and adding a new dimension to the original design.

The modern, double skin façade extension provides additional 657m², and incorporates a new reception entrance off Alexandra Road, workshops, teaching spaces as well as design studios. The original circular reading room has been restored and made available as a public venue.

Yvonne Gibbs, architect, Powell Dobson comments: "Due to the context of the Listed Building, it was imperative that the new extension was as transparent as possible to express the original scale and features of the historic fabric behind. The University was also looking for a truly sustainable solution, to both reduce energy consumption and create an inspiring place to learn."



Burntwood School, London

Allford Hall Monaghan Morris (AHMM)

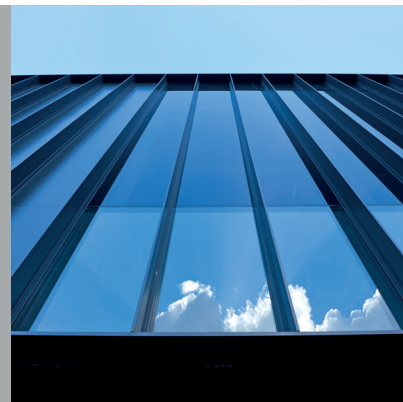
The transformation of Burntwood School in Wandsworth, London, has been recognised by four different institutions and organisations for its bold and characterful architectural expression, referencing Modernist elements of the existing buildings. Celebrating the Bauhaus design ethos, architects Allford Hall Monaghan Morris focused on using a system of bespoke constructional components, creating efficient and high-quality buildings.

One of the project's striking features, modular pre-cast concrete cladding with canted edges and different sized glazing panels is playfully arranged on a rigid grid, creating surprising interior spaces.

Offsite construction was critical for this project, therefore AluK developed a unique detail was to enable the windows to be attached to the pre-cast panels off site. All side hung open inwards gearing kits fitted to the open in windows were created as a customised set specifically for the project's varied window sizes.

Daniel Lewis, Senior Architect at AHMM comments: "For the project we required a bespoke solution for the fin face caps (145mm x 15mm top hat capping). AluK provided us with an excellent service – the company's proactive approach as well as technical and design expertise meant that we were able to realise our designs."

Burntwood School was awarded the prestigious Stirling Prize, the RIBA National Award 2015 for making a significant contribution to architecture, the Civic Trust Award 2015 for making an outstanding contribution to the quality and appearance of the built environment, and the New London Architecture Awards 2015: Education for the best new architecture in the capital; it also won the Concrete Society Award 2014.



Shakespeare House

bptw partnership

AluK window and door systems specified for the regeneration of Shakespeare House, Hackney, London, which saw 24 existing flats being converted into 18 high quality apartments. Working with Islington and Shoreditch Housing Association, bptw partnership reconfigured the existing housing block, installing additional windows to increase the amount of natural light and completely insulating the building to improve thermal efficiency.

For the refurbishment project the practice installed the 58BW window system as well as the 58BD and GT55 NI door systems on all the existing and proposed new elevations from ground to fifth floor level.

"AluK window and door systems integrated very well with the design ethos of the project, with the window surrounds achieving the deep reveal effect that was proposed at the planning stage".

Tredegar Place

Tredegar Place, showcasing AluK's 58BW and 58BD systems, along with the thermally broken GT55 door system.

The former site of a cash and carry in Bow, East London, was demolished to make way for the new and exciting residential development, Tredegar Place. Centra Living - part of Circle Housing, oversaw the creation of 87 new homes on the Tredegar Road site, transforming the space and bringing much needed family and affordable housing to the area.





AluK Head Office
Imperial Park
Celtic Way
Newport NP10 8BE
T: 01633 81 04 40
sales@aluk.co.uk

AluK Design Studio
5-11 Worship Street
London
EC2A 2AB
info@alukdesignstudio.co.uk

aluk.co.uk

Registered Office: AluK (GB) Limited, Imperial Park, Celtic Way, Newport, NP10 8BE
Registered Number: 02881320

ALUK[®]