



# Aluminium Window & Door Systems





# Contents

<b>BY EXPERTS</b>	<b>5</b>
WHY CHOOSE ALUMINIUM?	6
A SYSTEM FOR EVERY APPLICATION	8
COLOURS FOR EVERY OCCASION	9
TRIED, TESTED AND TRUSTED	11
 <b>WINDOW SYSTEMS</b>	 <b>12</b>
FUNCTIONALITY AND FLEXIBILITY	14
58BW FLUSH HI	16
58BW FLUSH	18
CASE STUDY	20
58BW CASEMENT HI	22
58BW CASEMENT	24
58BW ST FLUSH HI	26
58BW ST HERITAGE HI	28
58BW ST HERITAGE	30
CASE STUDY	32
58BW TILT BEFORE TURN HI	34
58BW TILT BEFORE TURN	36
TOP SWING REVERSABLE	38
C70S COMMERCIAL	40
 <b>DOOR SYSTEMS</b>	 <b>42</b>
58BD ENTRANCE	44
58BD FLUSH ENTRANCE	46
CASE STUDY	48
GT55 TB COMMERCIAL DOOR	50
GT55 NI COMMERCIAL DOOR	52
INFINIUM SLIDING	54
SC156 LIFT AND SLIDE	56
BSC94 LIFT AND SLIDE	58
BSC94 IN-LINE SLIDING	60
F82 BI-FOLD PLUS	62
F82 BI-FOLD	64
BSF70 BI-FOLD HI	66
BSF70 BI-FOLD	68
CASE STUDY	70





## By experts for experts

It's fair to say we live and breathe aluminium at AluK. From its melting point of 660.32°C, its vital role in the aerospace industry, to its remarkable low density, there's little we don't know about atomic number 13. More importantly, we're experts at using this versatile metal to create high performance and sustainable window and door systems that surpass the needs of fabricators and installers across the UK.

From the production line to our design and sales offices, every member of the AluK team is a leader in their field. It's this collective expertise and our traditional family values that has enabled us to design, engineer and manufacture industry-leading facade systems since 1993; that's over 25 years of experience.

Boasting slimmer sightlines and greater feature options, all our products are manufactured to the highest UK standards. So whether commercial or residential, modern or traditional, you can be confident our experts will ensure every AluK product delivers peerless performance and signature style.

---

AT ALUK WE BELIEVE  
COLLABORATION IS KING. IT'S  
WHY WE'RE PROUD OF THE  
PARTNERSHIPS WE'VE BUILT  
WITH FABRICATORS, INSTALLERS  
AND ARCHITECTS THROUGHOUT  
THE UK AND BEYOND

---



# Why choose AluK aluminium systems?

For over 25 years, we've been at the forefront of aluminium window and door design.

But why aluminium?

- › It's lightweight, strong and almost 100% recyclable
- › It doesn't warp or rust and is near maintenance-free
- › Plus it's exceptionally versatile and easy to install

## Driven by design

Without compromising on strength, our aluminium window and door systems are designed to offer your customers the narrowest of sightlines, allowing bigger glazing and providing greater light into their home.

Our integrated systems are designed for maximising profiles and parts, as well as to ensure fast fabrication and a wide range of installation options.

## Colour

Access a large spectrum of contemporary and classic colour choices and finishes.

We also offer a range of standard single and dual colour products from stock with our stock offer.

For full core offer details email [info.uk@aluk.com](mailto:info.uk@aluk.com)

## Security

We understand the importance of security to your customers. That's why all our window and door systems are independently tested to ensure they not only meet current security regulations for new builds, but that they're inherently burglar resistant too.

Most of our systems are also certified by PAS 24, Secured by Design and Q-marked accredited.

## Thermal efficiency

Our window and door systems offer award-winning U-value performance for both double and triple glazing.

In fact, we were the first company to ever gain an A-rated aluminium double glazed window system in the market.

## Performance

Each system includes water and acoustic barriers, and utilises the latest manufacturing technologies and techniques to provide long-term peace of mind.

They also have integrated drainage paths that allow water to pass through the system. This, combined with the high quality air seals and barriers, ensures they can tackle the everchanging British climate with ease.

## Window Energy Ratings

Our aluminium window systems are rated for their energy efficiency using the familiar A-G scale.

This means homeowners and architects can instantly see which windows to choose. WERs also affect fabricators, because in order to supply WER products a fabricator must join an official and recognised scheme.

This is to ensure that manufacturers can prove they have audited processes in place and that the ratings displayed are accurate.

As you'd expect, we have our own group scheme at AluK. This provides members fast track access to all our WER data, saving them valuable time and effort.



## Service excellence

Expert service is key at AluK, so our trained architectural technicians and engineers are always on hand to offer guidance and support from design through to installation. We also have highly experienced Project Consultants able to help with design, system selection, construction details and project specifications for your specific sector.

## AluK Academy

Training is another key service we provide. From CPDs and toolbox talks to hands-on guidance at our Academy Centre, we provide a wide range of training options to all our customers.

To find out more simply email [training.uk@aluk.com](mailto:training.uk@aluk.com)



# An AluK system for every application

If there's one thing homeowners, architects, installers and fabricators all have in common, it's the desire for choice. That's why we've created our wide range of aluminium façade systems, which meets the needs of different applications, performance and aesthetic demands.

To make life easy for homeowners, we've created three product ranges based on their individual requirements.

- ▶ For those looking for the thinnest sightlines and finest finish, there's our premium Infinium sliding door.
- ▶ If outstanding quality and standout at a competitive price is desired, the Luminia range is the obvious choice.
- ▶ While stylish design and everyday practicality is provided by the Optio range.

From a fabricator and installer perspective, we offer systems that cover everything from heavy duty and light commercial new builds, to large-scale refurbishment projects and residential new builds.

Whatever choice you make, you can be confident that our systems offer the superior performance and quality of aluminium through and through.



## Understanding Part L

### How do AluK products comply?

As a systems house, we have no choice but to comply with the new lower U-Values. We support the aim to reduce our carbon footprint in the UK and want to play our part by ensuring our windows and doors meet the new limiting values.

It's also important to us that we support our fabricators by ensuring we meet these lower U-Values with the same products and using double glazing.

#### Why is this important?

- ▶ The glazing market is not geared up to provide triple-glazing in volume.
- ▶ The cost of triple glazing is not competitive.
- ▶ Many fabricators are not able to manufacture triple glazed systems at volume.
- ▶ The weight of triple glazing makes it more difficult to handle and install, whilst putting more pressure on hinges and hardware.

### How have we changed our products?

Our route to meet the new regulations and support our customers has meant engineering many improvements to the internal design without changing the appearance of our systems.

Using new thermal break designs and foams, and new gaskets, our well-loved products have been modified to comfortably meet the new regulations for new build and existing dwellings.

Rest assured that many of our standard (non-HI) products can achieve both the 'Limiting' and lower 'Notional' U-values given in the English and Welsh regulations using triple glazing, if that is your preferred route.

For more information on new Part L regulations, head over to our dedicated website



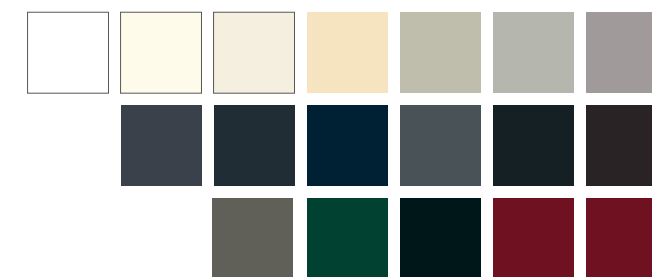
SCAN ME

# Colours for every occasion

From contemporary to heritage, the AluK colour collection combines four high-quality colour ranges that offer style and durability.

Elements, Homestead, Spectrum and Urbane each offer a wide choice of durable coatings that are extremely resistant to scratching and corrosion.

With an inspired range of textured, non-textured, metallic and special effects finishes, these palettes reflect both the latest colour trends and the enduring classics within the market.



## Elements

Our stylish matt colour range features 18 vibrant RAL options in a smooth finish. Inspired by the diversity of nature, Elements offers the perfect combination of rich colours and versatile shades that will compliment any style of property.



## Homestead

Inspired by traditional and period design, our timeless Homestead range offers a classic palette of tranquil neutrals and deep, cool hues. Combining the charm of the past with a modern, durable finish, Homestead has 13 tasteful RAL options to discover, all in a long-wearing textured finish for windows and doors.



## Spectrum

Spectrum combines striking tones with textured metallic and special effects finishes to create an opulent range that is both modern and highly durable. With 21 contemporary textured colours, Spectrum complements both high-end residential projects and volume specifications.



## Urbane

Inspired by the intensity of contrast, Urbane offers the distinctive combination of strong tones and smooth shades that match the look and feel of an anodised finish. With 14 bold metallic colours to choose from, Urbane offers a protective finish to windows and doors in high-end and commercial developments.

If you'd like a colour brochure please contact us on 01291 639739 or email us at [info.uk@aluk.com](mailto:info.uk@aluk.com)

These images should only be used as a colour guide rather than a true representation of the actual product colour.





## Tried, tested and trusted

From trusted favourites to the latest innovations, our comprehensive range of aluminium window and door systems has been designed and developed with fabricators, installers and homeowners in mind at every stage.

Furthermore, every system delivers the aesthetic appeal and exceptional build quality demanded by the industry. It also goes without saying they've all been tested and certified to the latest standards and accreditations.

These include PAS 24, BS4873, Secured By Design and Qualicoat for starters. Not to mention ISO 9001. They also hold Q-Mark Certifications for general performance windows and enhanced security windows and doors. Should we go on?

Whichever system you choose, we'll work closely with you to ensure you have all the information you require for successful fabrication and installation.

All the latest structural, thermal and wind calculations are available, as is a comprehensive suite of CAD, NBS Specifications, performance and environmental data.

ALWAYS UP TO THE TEST





# Window systems

For over two decades we've been designing unique aluminium window systems that exceed the performance standards expected in modern building design.

Manufactured to the highest standards, our systems are available in depths of 58mm, 70mm and 77mm, with a wide choice of colours and finishes customers desire, with the performance, quality and flexibility the trade demands.

An extensive range of complementary fittings are also available to ensure every design, whether commercial or residential, is exceptional.

We understand reputations are everything, so it goes without saying that all our aluminium window systems are rigorously tested and meet the most stringent security standards.

They also meet the Secured by Design standard issued by the UK Association of Chief Police Officers, and are BRE A-rated on the green guide.





# Functionality and flexibility

We offer a wide range of window frame options that cater for various applications such as interface depths or bay angles.

We also understand that the ability to combine frame options is a major benefit to both the cost and appearance.

Our frame options include deep head profiles for trickle vents, odd leg frames for accommodating hardware timber and heritage for overcoming stone mullion and cill details.

Equal leg frame options are available from 25mm, 35mm and 55mm options.

Frame extenders are also available for our 70mm systems and for improved U-values.

## Glazing options

Every project is different, which is why our systems allow for both internal and external glazing options.

We also offer glazing add-ons to suit heritage style applications.

## Aesthetics

We offer a wide range of internal and external aesthetic styles. Chamfered, Ovolo, Square or Putty line options can really make any project look modern or traditional.

Our double beaded options allow for internal glazing without the use of dummy vents.

## Openings

AluK windows are available in a full range of opening options; from open in to open out, side hung, top hung, bottom hung and tilt before turn, to French casement, fixed light and multi-light.

## Design features

- › From odd leg and equal leg to deep head and frame reversers
- › Internal and external glazing options
- › PAS 24 certified
- › Integrated systems for maximising profiles and parts
- › Three chamber profile for maximising strength while crimping – achieves perfect corner assembly every time



Multiple glazing options



A wide range of aesthetics





# 58BW FLUSH HI Window



The 58BW Flush window combines minimal sightlines and maximum weather resistance with all the best features of the tried and trusted 58BW range: advanced performance, versatility and security.

With a choice of slim sashes and a range of configuration options, the flush finish and slim sightlines of the 58BW Flush make this the perfect choice for contemporary new-build and refurbishment projects.

A double rebate provides market-leading weather performance, even in more exposed locations, and the 58BW Flush utilises common hardware with the existing 58BW and Heritage ST window ranges to ensure it can withstand a range of weather conditions.

The 58BW Flush shares the same sashes, features and hardware with the 70mm frame option for the 58BW suite, making it quicker and easier to fabricate with just three new profiles.

DESIGN FEATURES

- › Advanced weather performance – features like the double rebate, and friction stays on side-hung windows offer protection against bad weather conditions
- › Slimmer sightlines – 45mm ultra-slim sash suits a range of property styles
- › Unique polyamide thermal break design to improve thermal performance
- › Certified under the Secured by Design scheme
- › Tested to PAS 24

OPTIONS

- › Open-out sashes including top and side-hung.
- › The flush shadow line can be complimented with a choice of flat, putty line or stepped edge (crittal style) vent styles to suit the property
- › Available in a range of standard and RAL colours.
- › Stock offer – readily available on a 5-day lead time in colours 9910HG, 7016M, and 9005M as well as dual colour white/grey and white/black.

SPECIFICATIONS

Performance and accreditations	58BW FLUSH HI
U-Value (Double Glazing)	1.4 W/m²K
U-Value (Triple Glazing)	1.2 W/m²K
Window Energy Rating (WER)	B - C
BRE Green Guide Rating	A rated
Air Permeability	Class 4 (600 Pa)
Water Tightness	Class 9a (600Pa)
Wind Resistance	Class E2400 (2400 Pa)
Security	PAS 24
3rd Party Certification Q-Mark	✓

System	
Depth	70mm
Configurations	
Opening	Open-Out
Top Hung	✓
Side Hung	✓
Bottom Hung	✓
Dummy Sashes	✓
Fixed Light	✓
Multi Light	✓
French Casement	✓

Size and weight limits	
Top Hung	
Max Size (mm)	1750w x 2500h
Min. Size	300w x 350h
Max Weight	180kg
Side Hung	
Max Size (mm)	1300w x 1750h
Min. Size	300w x 300h
Max Weight	55kg
Fixed Light	
Max Size (mm)	-
Min. Size	-
Max Weight	250kg

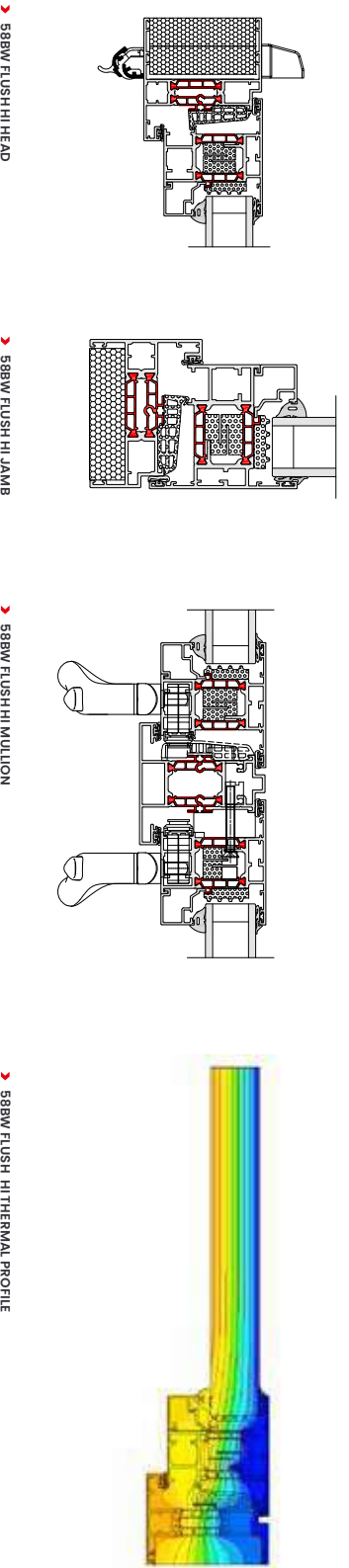
Glazing	
Glazing Options	Internal & External
Glazing Thickness**	24mm-40mm

System Features	
Single Colour	✓
Dual Colour	✓
Textured Finish	✓
Anodised Finish	✓
Multi-Point Locking	✓
Sightline (Frame to Vent)	98mm
Sightline (Vent to Mullion to Vent)	113mm
Sightline (Dummy Sash)	158mm
Sightline (Fixed Light)	53mm

\*\*Glazing thickness: Other thicknesses may be possible dependant on profile combinations specified. Fabricators should refer to AluK technical manual glazing section for details.

CAD CROSS SECTIONS AND THERMAL PROFILE

Additional details are available on request.





# 58BW FLUSH Window



The 58BW Flush window combines minimal sightlines and maximum weather resistance with all the best features of the tried and trusted 58BW range: advanced performance, versatility and security.

With a choice of slim sashes and a range of configuration options, the flush finish and slim sightlines of the 58BW Flush make this the perfect choice for contemporary new-build and refurbishment projects.

A double rebate provides market-leading weather performance, even in more exposed locations, and the 58BW Flush utilises common hardware with the existing 58BW and Heritage ST window ranges to ensure it can withstand a range of weather conditions.

The 58BW Flush shares the same sashes, features and hardware with the 70mm frame option for the 58BW suite, making it quicker and easier to fabricate with just three new profiles.

DESIGN FEATURES

- › Advanced weather performance – features like the double rebate, and friction stays on side-hung windows offer protection against bad weather conditions
- › Slimmer sightlines – 45mm ultra-slim sash suits a range of property styles
- › Unique polyamide thermal break design to improve thermal performance
- › Certified under the Secured by Design scheme
- › Tested to PAS 24

OPTIONS

- › Open-out sashes including top and side-hung.
- › The flush shadow line can be complimented with a choice of flat, putty line or stepped edge (crittal style) vent styles to suit the property
- › Available in a range of standard and RAL colours.
- › Stock offer – profiles readily available on a 5-day lead time in colours 9910HG, 7016M, and 9005M as well as dual colour white/grey and white/black.

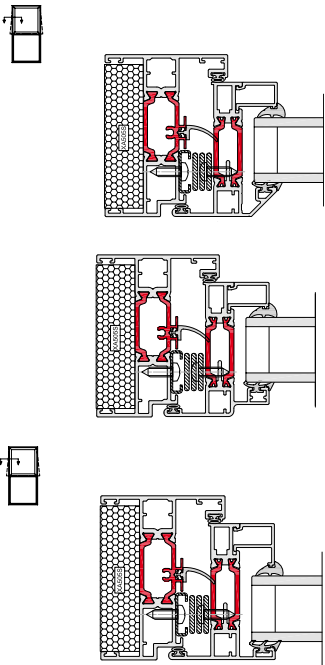
SPECIFICATIONS

Performance and accreditations	58BW FLUSH
U-Value (Double Glazing) (Ug: 1.0 W/m²K)	1.5 W/m²K
Window Energy Rating (WER)	B-C
Air Permeability	Class 4 (600 Pa)
Water Tightness	Class 9a (600 Pa)
Wind Resistance	Class E2400 (2400 Pa)
Security	PAS 24 & SBD
3rd Party Certification Q-Mark	✓
<b>System</b>	
Depth	70mm
<b>Configurations</b>	
Top Hung	✓
Side Hung	✓
Dummy Sashes	✓
Multi-Light	✓
French Casement	✓
Fixed Light	✓
<b>Size and weight limits</b>	
<b>Top Hung</b>	
Max Size (mm)	1400w x 1200h
Min. Size (mm)	350w x 250h
Max Weight	35kg
<b>Side Hung</b>	
Max Size (mm)	700w x 1400h
Min. Size (mm)	300w x 350h
Max Weight	26kg
<b>Fixed Light</b>	
Max Weight	250kg
<b>Glazing</b>	
Glazing Options	Internal Bead
Glazing Thickness	24mm - 35mm
<b>System Features</b>	
Single Colour	✓
Dual Colour	✓
Textured Finish	✓
Anodised Finish	✓
Multi-Point Locking	✓
Sightline (Frame to Vent)	74mm
Sightline (Vent to Mullion to Vent)	111mm
Sightline (Dummy Sash)	74mm
Sightline (Fixed Light)	43mm

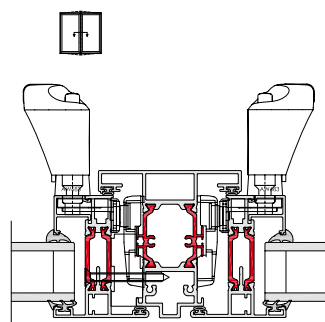
CAD CROSS SECTIONS AND THERMAL PROFILE

Additional details are available on request.

58BW FLUSH JAMBS



58BW FLUSH FRENCH CASEMENT FLOATING MULLION



58BW THERMAL PROFILE





# Contemporary Design with a traditional twist

AluK's 58BW Flush windows were launched at the start of 2020 as the ideal replacement for timber windows in traditional refurbishment projects. Replicating the slim sightlines and sharp shadow lines of timber, they offer all the inherent benefits of aluminium, such as low maintenance, and enhanced security, thermal and weather performance.

For the owners of a picturesque brick and flint cottage in rural Hampshire, they proved the perfect choice to replace draughty and inefficient timber frames in their 19th century home.

The owners wanted to replace their existing windows with something which maintained the essential character of the property, but which had a nod to contemporary 21st century design. They chose AluK's 58BW frames, with an ultra slim 45mm sightline on the sash and 24mm on the frame, primarily because of the aesthetics, but also because they are virtually maintenance free.

In total, 13 open out casement windows have been installed in the cottage, all in RAL7004 Signal Grey with a 5mm shadow line and no visible gasket. Double glazed throughout, they are not only eliminating draughts, but also helping to reduce energy bills.

The windows were manufactured by AluK's fabrication partner CWG Choices and installed by Allums Property Services of Newbury. Fabrication is straightforward because the 58BW Flush uses the same standard sash profiles as the AluK 58BW ST window and, installation is made easy thanks to the 70mm depth and internal glazing.

Kevin Allum of Allums Property Services commented: "This was the first time we had installed the 58BW Flush frames and it was a real pleasure. The installation looks great and the homeowners were delighted with the whole process from start to finish."





# 58BW CASEMENT HI Window



Built to the highest UK standards, the 58BW Window System delivers a high performance and cost-effective solution with impressively narrow profiles. Equally at home on residential and commercial projects, the system is available in a number of formats including Top Hung, Side Hung and French Casement.

The system’s clean lines and advanced functionality meet the demands of almost every modern building construction. Its competitive pricing also makes it a highly popular choice with specifiers both in the UK and around the globe. In addition to being certified under Secured By Design and tested to PAS 24, the 58BW also holds a Green Guide ‘A’ rating.

DESIGN FEATURES

- › Certified under the Secured By Design scheme
- › Tested to PAS 24
- › Integrated deep head profiles for ease of trickle ventilation
- › Unique polyamide thermal break design to improve thermal performance
- › Casement system sightlines to match the Tilt-Before-Turn window sightlines
- › Reverse rebate option for internal glazing throughout

OPTIONS

- › Available in two frame depths: 58mm or 70mm
- › Supports both open-in and open-out projects
- › Internally or externally glazed to accommodate low and high-rise projects
- › Glazing 24mm-40mm
- › Available in the following configurations: Top Hung, Side Hung, Bottom Hung, Fixed Light, Multi-light and French Casement
- › Available for Lifetime Homes (LFT)
- › Dedicated fixing straps for ease of installation
- › Designed with a Euro Groove to accommodate standard locking hardware
- › Smoke vent certification compliance to EN12101-2:2003 Annex G
- › Available in single or dual colour polyester powder coating, texture and anodised finishes

SPECIFICATIONS

Performance and accreditations	58BW CASEMENT HI
U-Value (Double Glazing)	1.4 W/m²K
U-Value (Triple Glazing)	1.2 W/m²K
Window Energy Rating (WER)	B - C
BRE Green Guide Rating	A rated
Air Permeability	Class 4 (600 Pa)
Water Tightness	Class 9a (600Pa)
Wind Resistance	Class E2400 (2400 Pa)
Security	PAS 24
3rd Party Certification Q-Mark	✓

System	58 & 70mm
Configurations	Open-Out
Opening	Open-Out
Top Hung	✓
Side Hung	✓
Bottom Hung	✓
Tilt & Turn	-
Fixed Light	✓
Multi-Light	✓
French Casement	✓

Size and weight limits	
Top Hung	
Max Size (mm)	1750w x 2500h
Min. Size	300w x 350h
Max Weight	180kg
Side Hung	
Max Size (mm)	838w x 1750h
Min. Size	300w x 300h
Max Weight	55kg
Bottom Hung	
Max Size (mm)	1750h x 1750w
Min. Size	350h x 350w
Max Weight	45kg (5 hinges)
Butt Hinges (Side & Bottom Hung)	
Top hung (max weight)	40 Kg
Side hung (max weight)	24 Kg
Fixed Light	
Max Weight	250kg

Glazing	
Glazing Options Internal Bead	Internal & External Bead
Glazing Thickness **	24mm - 40mm

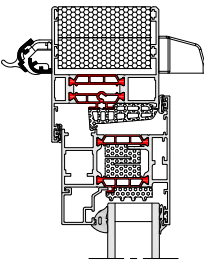
System Features	
Single Colour	✓
Dual Colour	✓
Textured Finish	✓
Anodised Finish	✓
Multi-Point Locking	✓
Smoke Vent Compliance	✓
Sightline (Frame to Vent)	75mm
Sightline (Vent to Mullion)	89mm
Sightline (Fixed Light)	43mm

\*\*Glazing thickness: Other thicknesses may be possible dependant on profile combinations specified. Fabricators should refer to AluK technical manual glazing section for details.

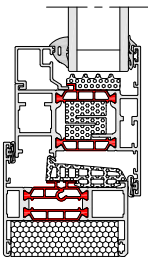
CAD CROSS SECTIONS AND THERMAL PROFILE

Additional details are available on request.

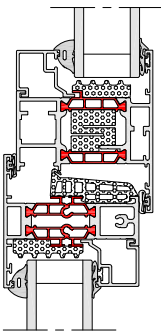
58BW CASEMENT HI HEAD



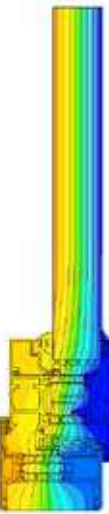
58BW CASEMENT HI JAMB



58BW CASEMENT HI MULLION



58BW CASEMENT HI THERMAL PROFILE





# 58BW CASEMENT Window

CHAMFERED



SQUARE



Built to the highest UK standards, this effective and high performance solution offers clean lines and advanced functionality.

Available in either 58mm or 70mm frame depth, casement windows are the perfect choice for both residential and light commercial projects, whether new build or renovation. Windows can also be made to project in or out.

DESIGN FEATURES

- › Certified under the Secured By Design scheme
- › Tested to PAS 24
- › Integrated deep head profiles for ease of trickle ventilation
- › Unique polyamide thermal break design to improve thermal performance
- › Casement system sightlines to match the Tilt-Before-Turn window sightlines
- › Reverse rebate option for internal glazing throughout

OPTIONS

- › Available in two frame depths: 58mm or 70mm
- › Supports both open-in and open-out projects
- › Internally or externally glazed to accommodate low and high-rise projects
- › Glazing 23mm-40mm
- › Available in the following configurations: Top Hung, Side Hung, Bottom Hung, Fixed Light, Multi-light and French Casement
- › Available for Lifetime Homes (LFT)
- › Dedicated fixing straps for ease of installation
- › Designed with a Euro Groove to accommodate standard locking hardware
- › Smoke vent certification compliance to EN12101-2:2003 Annex G
- › Available in single or dual colour polyester powder coating, texture and anodised finishes

SPECIFICATIONS

Performance\* and Accreditations

U-Value (Double Glazing) (Ug: 1.0 W/m²K)	1.5 W/m²K
U-Value (Triple Glazing) (Ug: 0.7 W/m²K)	1.2 W/m²K
Window Energy Rating (WER)	B - C
BRE Green Guide Rating	A Rated
Air Permeability	Class 4 (600 Pa)
Water Tightness	Class 9a (600 Pa)
Wind Resistance	Class E2400 (2400pa)
Acoustic Performance	Rw (C;Ctr) 42 (-1;-5) dB
Security	PAS 24 & SBD
3rd Party Certification Q-Mark	✓

System

Depth	58mm & 70mm
-------	-------------

Configurations

Opening	Open-Out
Top Hung	✓
Side Hung	✓
Bottom Hung	✓
Tilt & Turn	x
Fixed Light	✓
Multi-Light	✓
French Casement	✓

Size and weight limits

<b>Top Hung</b>	
Max Size (mm)	1750w x 2500h
Min. Size (mm)	300w x 200h
Max Weight	180kg
<b>Side Hung</b>	
Max Size (mm)	838w x 1750h
Min. Size (mm)	300w x 300h
Max Weight	55kg
<b>Bottom Hung</b>	
Max Size (mm)	1750w x 2500h
Min. Size (mm)	300w x 200h
Max Weight	50kg (2 hinges)
<b>Fixed Light</b>	
Max Weight	250kg

Glazing

Glazing Options	Internal & External Bead
Glazing Thickness	23mm-40mm

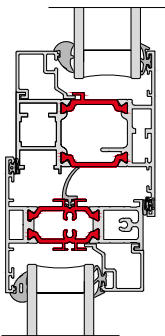
System Features

Single Colour	✓
Dual Colour	✓
Textured Finish	✓
Anodised Finish	✓
Multi-Point Locking	✓
Smoke Vent Compliance	✓
Sightline (Frame to Vent)	75mm
Sightline (Vent to Mullion)	89mm
Sightline (Fixed Light)	43mm

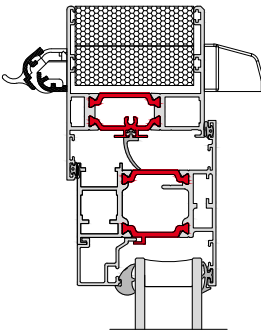
CAD CROSS SECTIONS AND THERMAL PROFILE

Additional details are available on request.

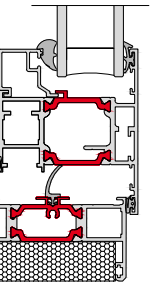
58BW MULLION TRANSOM



58BW HEAD



58BW CILL



58BW THERMAL PROFILE





# 58BW ST FLUSH HI Window



The 58BW ST Flush window combines minimal sightlines of the ST system with all the best features of the tried and trusted 58BW range: advanced performance, versatility and security.

With a choice of three slim sashes and a range of configuration options, the flush finish and slimmer sightlines of the 58BW ST Flush make this the perfect choice for contemporary new-build and refurbishment projects.

A double rebate provides market-leading weather performance, even in more exposed locations, and the 58BW ST Flush utilises common hardware with the existing 58BW and Heritage ST window ranges to ensure it can withstand a range of weather conditions.

The 58BW ST Flush shares the same sashes, features and hardware with the 70mm frame option for the 58BW suite, making it quicker and easier to fabricate with just three new profiles.

DESIGN FEATURES

- › Advanced weather performance – features like the double rebate, and friction stays on side-hung windows offer protection against bad weather conditions
- › Slimmer sightlines – 45mm ultra-slim sash suits a range of property styles
- › Unique polyamide thermal break design to improve thermal performance
- › Certified under the Secured by Design scheme
- › Tested to PAS 24

OPTIONS

- › Open-out sashes including top and side-hung.
- › The flush shadow line can be complimented with a choice of flat, putty line or stepped edge (crittal style) vent styles to suit the property
- › Available in a range of standard and RAL colours.
- › Stock offer – readily available on a 5-day lead time in colours 9910HG, 7016M, and 9005M as well as dual colour white/grey and white/black.

SPECIFICATIONS

Performance and accreditations	58BW ST FLUSH HI
U-Value (Double Glazing)	1.4 W/m²K
U-Value (Triple Glazing)	1.0 W/m²K
Window Energy Rating (WER)	A – B
BRE Green Guide Rating	A rated
Air Permeability	Class 4 (600 Pa)
Water Tightness	Class E1500 (1500 Pa)
Wind Resistance	Class E2400 (2400 Pa)
Security	PAS 24 & SBD
3rd Party Certification Q-Mark	✓

System	
Depth	58 & 70mm
Configurations	
Opening	Open-Out
Top hung	✓
Side hung	✓
Bottom hung	✓
Fixed light	✓
Multi-light	✓
French casement	✓

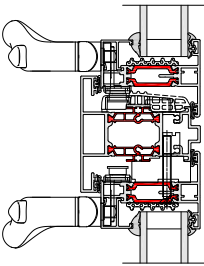
Size and weight limits	
Top Hung	
Max Size (mm)	1436w x1336h
Min. Size	386w x 336h
Max Weight	40kg
Side Hung	
Max Size (mm)	736w x 1436h
Min. Size	336w x 386h
Max Weight	24kg
Fixed Light	
Max Size (mm)	-
Min. Size	-
Max Weight	250kg

System Features	
Frame depth	58mm and 70mm
Dual colour option	✓
Multi-point locking	✓
Glazing options	Internal and external
Glazing thickness	24mm - 32mm
Sightline (Frame to Vent)	66mm
Sightline (Vent to Mullion)	81mm
Sightline (Fixed Light)	43mm

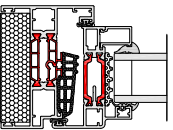
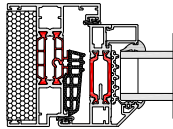
CAD CROSS SECTIONS AND THERMAL PROFILE

Additional details are available on request.

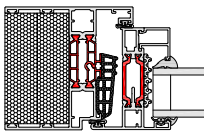
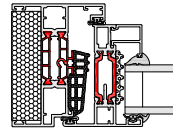
58BW ST FLUSH HI FRENCH CASEMENT



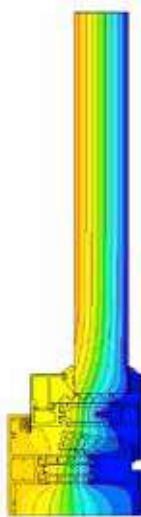
58BW ST FLUSH HI JAMB SECTION 1



58BW ST FLUSH HI JAMB SECTION 2



58BW ST HI THERMAL PROFILE



\*\*Glazing thickness: Other thicknesses may be possible dependant on profile combinations specified. Fabricators should refer to AluK technical manual glazing section for details.



# 58BW ST HI Steel Replacement System



S Q U A R E



P U T T Y   L I N E



S T E P P E D   E D G E

Ideal for projects where planning or design requires the installation of sympathetic materials, our 58BW ST HI Steel Replacement Window System provides the look of steel with the benefits of aluminium. Designed to replace and complement existing steel windows, the range has been specifically developed for use on listed buildings, warehouses and similar buildings, where steel windows have always traditionally been fitted.

Available in a wide range of styles including Top Hung, Side Hung, Fixed Light and French Casement, the system cleverly replicates the narrow sight lines associated with steel windows whilst providing superior performance and security. The system also includes hardware that is sympathetic to traditional steel window designs.

DESIGN FEATURES

- › Slim sightlines to match existing steel windows
- › Internally and externally beaded for ease of site glazing on high-rise applications
- › Unique polyamide thermal break design to improve performance
- › Integrated deep head profiles for ease of trickle ventilation
- › Accommodates standard hardware including friction stays and shoot bolt locking
- › Certified under the Secured By Design scheme
- › Ideal for Heritage, Listed Buildings and steel window replacements

OPTIONS

- › Accommodates up to 32mm glazing units for thermal and acoustic performance
- › Casement clips available for easy fit and removal of dummy vents
- › Dedicated fixing straps for ease of installation
- › Four different sash profiles to achieve design and planning permission requirements
- › Available in single or dual colour polyester powder coating, texture and anodised finishes



SPECIFICATIONS

Performance and accreditations	58BW ST HI
U-Value (Double Glazing) (Ug: 1.0 W/m²K)	1.4 W/m²K
U-Value (Triple Glazing) (Ug: 0.7 W/m²K)	1.1 W/m²K
Window Energy Rating (WER)	A - B
BRE Green Guide Rating	A rated
Air Permeability	Class 4 (600 Pa)
Water Tightness	Class E1500 (1500 Pa)
Wind Resistance	Class E2400 (2400 Pa)
Security	PAS 24 & SBD
3rd Party Certification Q-Mark	✓

System	
Depth	58mm & 70mm
Configurations	
Opening	Open-Out
Top Hung	✓
Side Hung	✓
Bottom Hung	✓
Fixed Light	✓
Multi Light	✓

Size and weight limits	
Top Hung	
Max Size (mm)	1436w x 1336h
Min. Size	386w x 336h
Max Weight	40kg
Side Hung	
Max Size (mm)	736w x 1436h
Min. Size	336w x 386h
Max Weight	24kg
Bottom Hung	
Max Size (mm)	-
Min. Size	-
Max Weight	45kg (5 hinges)
Fixed Light	
Max Size (mm)	-
Min. Size	-
Max Weight	250kg

Glazing	
Glazing Options	Internal & External
Glazing Thickness**	24mm-32mm

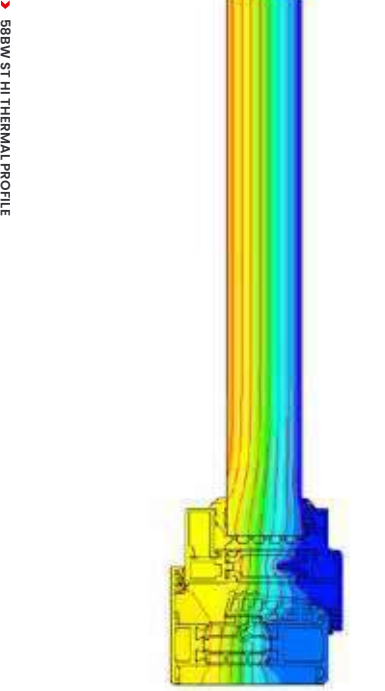
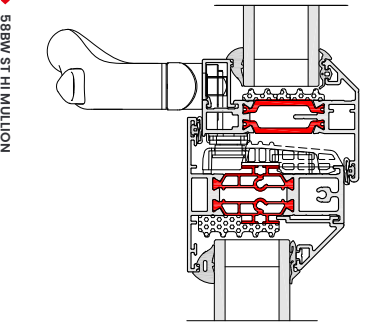
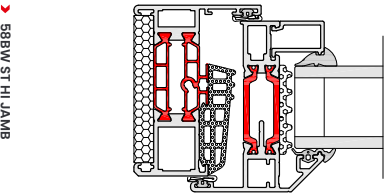
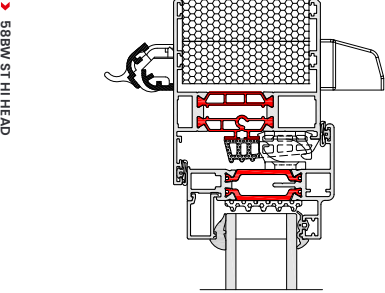
System Features	
Single Colour	✓
Dual Colour	✓
Textured Finish	✓
Anodised Finish	✓
Multi-Point Locking	✓
Sightline (Frame To vent)	66mm
Sightline (Vent To Mullion)	81mm
Sightline (Fixed Light)	43mm

Aesthetics	
Putty Line	✓
Stepped Edge	✓
Square	✓
Exterior Glazed Chamfer	✓

\*\*Glazing thickness: Other thicknesses may be possible dependant on profile combinations specified. Fabricators should refer to AluK technical manual glazing section for details.

CAD CROSS SECTIONS AND THERMAL PROFILE

Additional details are available on request.





# 58BW ST

## Heritage Window

SQUARE



PUTTY LINE



STEPPED EDGE



The look of steel, the benefits of aluminium. A win-win for designers and homeowners alike. Featuring industry-leading build quality, our 58BW ST aluminium windows are an ideal replacement for existing steel windows.

In addition to impressive high thermal and acoustic performance, the design also replicates the minimal sightlines associated with steel windows, whilst providing superior performance and security.

DESIGN FEATURES

- › Certified under the Secured By Design scheme
- › Tested to PAS 24
- › Green guide rated A
- › Integrated deep head profiles for ease of trickle ventilation
- › Unique polyamide thermal break design to improve thermal performance
- › Slim sightlines to match existing steel window
- › Internally beaded for ease of glazing on highrise projects

OPTIONS

- › 58mm or 70mm frame depth to accommodate varying types of applications
- › Internally or externally glazed
- › Glazing 25mm – 28mm
- › Available for Lifetime Homes (LFT)
- › Available in a range of single or dual colour and anodised finishes
- › Available in the following aesthetics: Stepped Edge, Square and Putty Line
- › Available in the following configurations: top hung, side hung, bottom hung, fixed light, multi-light and French casement
- › Double headed option allows for internal glazing without the use of dummy vents
- › Accommodates standard hardware

SPECIFICATIONS

Performance* and accreditations	
U-Value (Double Glazing) (Ug: 1.0 W/m²K)	1.5 W/m²K
U-Value (Triple Glazing) (Ug: 0.7 W/m²K)	1.2 W/m²K
Window Energy Rating (WER)	A – B
BRE Green Guide Rating	A rated
Air Permeability	Class 4 (600 Pa)
Water Tightness	Class 9a (600 Pa)
Wind Resistance	Class E2400 (2400 Pa)
Acoustic Performance	Rw (C;Ctr) 43 (-2;-5) dB
Security	PAS 24 & SBD
3rd Party Certification Q-Mark	✓

System	
Depth	58mm & 70mm

Configurations	
Opening	Open-Out
Top Hung	✓
Side Hung	✓
Bottom Hung	✓
Fixed Light	✓
Multi-Light	✓

Size and weight limits	
Top Hung	
Max Size (mm)	1400w x 1200h
Min. Size (mm)	350w x 250h
Max Weight	35kg
Side Hung	
Max Size (mm)	700w x 1400h
Min. Size (mm)	300w x 350h
Max Weight	26kg
Bottom Hung	
Max Size (mm)	-
Min. Size (mm)	-
Max Weight	50kg (2 hinges)
Fixed Light	
Max Size (mm)	-
Min. Size (mm)	-
Max Weight	250kg

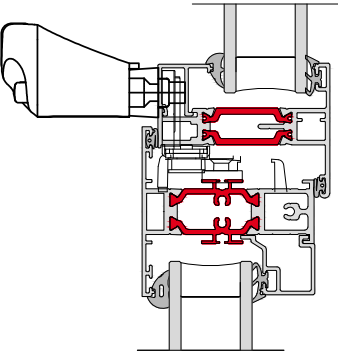
Glazing	
Glazing Options	Internal & external
Glazing Thickness**	25mm-28mm

System Features	
Single Colour	✓
Dual Colour	✓
Textured Finish	✓
Anodised Finish	✓
Multi-Point Locking	✓
Sightline (Frame To Vent)	66mm
Sightline (Vent To Mullion)	79mm
Sightline (Fixed Light)	43mm

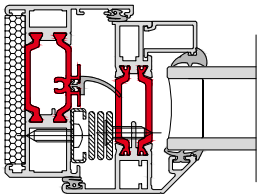
CAD CROSS SECTIONS AND THERMAL PROFILE

Additional details are available on request.

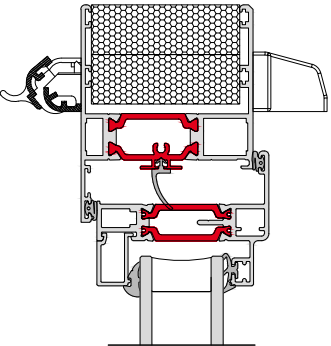
58BW ST FLAT



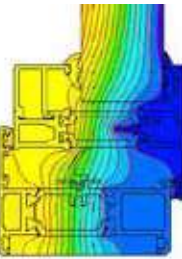
58BW ST JAMB



58BW ST HEAD



58BW ST THERMAL PROFILE



\* Performance data based on CEN size for Building Regulations. For full test performance details please contact Technical Services. Aluk recommends checking all system performance for any scheme prior to use.  
\*\*Glazing thickness: Other thicknesses may be possible dependant on profile combinations specified. Fabricators should refer to Aluk technical manual glazing section for details.



# Anything but run of the mill

Grade II listed, Harby Mill on the borders of Nottinghamshire and Lincolnshire was a working tower windmill right up until the 1930s.

An iconic local landmark, it was built in 1877 to replace a wooden original. Once milling on the site ended though, the building lost its sails and gradually fell into a state of disrepair. That was until it was rescued 30 years ago and converted into a quirky and luxurious five-storey home.

The most recent additions are AluK 58BW Heritage aluminium windows and 58BD doors, which have been installed throughout.

The 58BW ST Heritage windows were judged to be a better match to the cast iron originals in the mill tower than the soft wood products which were being replaced, and they were accepted and approved by both the local conservation officer and the planning committee after a detailed reporting process.

Designed primarily to replace steel windows, the 58BW ST profiles feature traditional square sections and sightlines of just 43mm in a fixed light. At Harby Mill, they were specified in RAL1015 Light Ivory finish and, for the 11 windows installed in the tower itself, with matching square glazing bars.

All of the windows and doors feature 24mm double glazing which has transformed the energy efficiency of the property, as well as providing reassuring levels of security over the timber windows they replaced.

AluK's 58BW window system allows fabricators to manufacture a wide range of traditional and contemporary window designs and configurations using a core range of profiles and ancillaries. This makes it a hugely versatile and cost-effective option for specifiers and consumers.





# 58BW TBT HI Window



Offering exceptional child safety and seamless operation, our tilt before turn windows are an ever-popular choice for both multi-residential and light commercial applications.

Made from high performance aluminium these sustainable systems are inherently strong and lightweight. They're also an ideal solution for high-rise buildings where internal glazing and ease of cleaning are essential.

DESIGN FEATURES

- › Certified under the Secured By Design scheme
- › Tested to PAS 24
- › Green guide rated A
- › Integrated deep head profiles for ease of trickle ventilation
- › Unique polyamide thermal break design to improve thermal performance

OPTIONS

- › Glazing 24mm – 40mm
- › Available in a range of single or dual colour and anodised finishes
- › Available in the following aesthetics: Bay, Contemporary and Square
- › Available in the following configurations: tilt-before-turn, side hung, fixed light and multi-light
- › Available for Lifetime Homes (LFT)

SPECIFICATIONS

Performance and accreditations	58BW TBT HI
U-Value (Double Glazing)	1.4 W/m²K
U-Value (Triple Glazing)	1.2 W/m²K
Window Energy Rating (WER)	B – C
BRE Green Guide Rating	A rated
Air Permeability	Class 4 (600 Pa)
Water Tightness	Class 8a (450Pa)
Wind Resistance	Class E2400 (2400 Pa)
Security	PAS 24
3rd Party Certification Q-Mark	✓

System	
Depth	58 & 70mm
Configurations	
Opening	Open-in
Top Hung	-
Side Hung	✓
Bottom Hung	✓
Tilt & Turn	✓
Fixed Light	✓
Multi-Light	✓
French Casement	-

Size and weight limits	
Side Hung	
Max Size (mm)	1725mm x 2300mm
Min. Size	380mm x 575mm / 480mm x 375mm
Max Weight	150kgs
Bottom Hung	
Max Size (mm)	1725w x 2300mm
Min. Size	380mm x 575mm / 480mm x 375mm
Max Weight	150kgs
Tilt & Turn	
Max Size (mm)	1725w x 2300mm
Min. Size (mm)	380mm x 575mm / 480mm x 375mm
Max Weight	150 kgs
Fixed Light	
Max Weight	250kg

Glazing	
Glazing Options	Internal Bead
Glazing Thickness **	24mm - 40mm

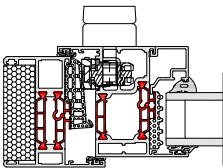
System Features	
Single Colour	✓
Dual colour option	✓
Textured Finish	✓
Annodised Finish	✓
Multi-Point Locking	✓
Lifetime Homes	✓
Sightline (Frame to Vent)	86mm
Sightline (Vent to Mullion)	100mm
Sightline (Fixed Light)	43mm

\*\*Glazing thickness: Other thicknesses may be possible dependant on profile combinations specified. Fabricators should refer to AluK technical manual glazing section for details.

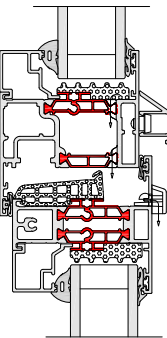
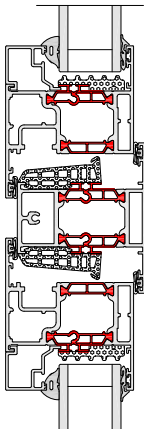
CAD CROSS SECTIONS AND THERMAL PROFILE

Additional details are available on request.

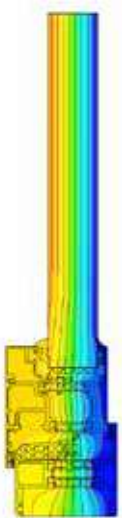
58BW TBT HI HEAD



58BW TBT HI MULLION



58BW TBT HI THERMAL PROFILE





# 58BW TBT Window

Offering exceptional child safety and seamless operation, our tilt before turn windows are an ever-popular choice for both multi-residential and light commercial applications.

Made from high performance aluminium these sustainable systems are inherently strong and lightweight. They're also an ideal solution for high-rise buildings where internal glazing and ease of cleaning are essential.



DESIGN FEATURES

- › Certified under the Secured By Design scheme
- › Tested to PAS 24
- › Integrated deep head profiles for ease of trickle ventilation
- › Unique polyamide thermal break design to improve thermal performance

OPTIONS

- › Glazing 24mm – 40mm
- › Available in a range of single or dual colour and anodised finishes
- › Available in the following aesthetics: Bay, Contemporary and Square
- › Available in the following configurations: tilt-before-turn, side hung, fixed light and multi-light
- › Available for Lifetime Homes (LFT)

SPECIFICATIONS

<b>Performance* and accreditations</b>	
U-Value (Double Glazing) (Ug: 1.0 W/m²K)	1.5 W/m²K
U-Value (Triple Glazing) (Ug: 0.7 W/m²K)	1.3 W/m²K
Window Energy Rating (WER)	B - C
Air Tightness	Class 4 (600 Pa)
Water Tightness	Class 8a (450 Pa)
Wind Resistance	Class E2400 (2400 Pa)
Acoustic Performance	Rw (C;Ctr) 44 (-1;-4) dB
Security	PAS 24 & SBD
3rd Party Certification Q-Mark	✓

<b>System</b>	
Depth	58mm & 70mm

<b>Configurations</b>	
Opening	Open-In
Top Hung	x
Side Hung	✓
Bottom Hung	✓
Tilt & Turn	✓
Fixed Light	✓
Multi-Light	✓
French Casement	x

<b>Size and weight limits</b>	
<b>Side Hung</b>	
Max Size (mm)	1725w x 2300h
Min. Size (mm)	380w x 575h / 480w x 375h
Max Weight	150kg
<b>Bottom Hung</b>	
Max Size (mm)	1725w x 2300h
Min. Size (mm)	380w x 575h / 480w x 375h
Max Weight	150kg
<b>Tilt &amp; Turn</b>	
Max Size (mm)	1725w x 2300h
Min. Size (mm)	380w x 575h / 480w x 375h
Max Weight	150kg
<b>Fixed Light</b>	
Max Weight	250kg

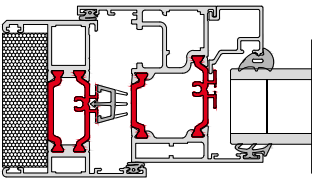
<b>Glazing</b>	
Glazing Options	Internal Bead
Glazing Thickness	24mm-40mm

<b>System Features</b>	
Single Colour	✓
Dual Colour	✓
Textured Finish	✓
Anodised Finish	✓
Multi-Point Locking	✓
Lifetime Homes	✓
Sightline (Frame to Vent)	86mm
Sightline (Vent to Mullion)	100mm
Sightline (Fixed Light)	43mm

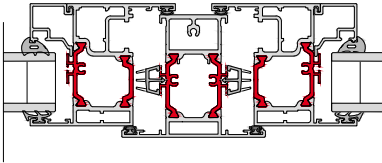
CAD CROSS SECTIONS AND THERMAL PROFILE

Additional details are available on request.

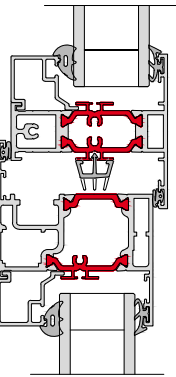
› 58BW OPEN-IN JAMB DETAIL



› 58BW OPEN-IN MULLION DETAIL



› 58BW OPEN-IN TRANSOM DETAIL



\* Performance data based on CEN size for Building Regulations. For full test performance details please contact Technical Services. AluK recommends checking all system performance for any scheme prior to use.



# Top Swing Reversible Window



Easy to clean and effortless to operate, our ever-popular top swing reversible windows increase thermal performance, improve safety and exceed modern building design performance standards.

Ideal for use in high-rise structures, the windows open an impressive 180°, allowing completely pain-free pane cleaning. The system does not encroach inside the building, as the mechanism allows the opening sash to completely rotate on itself whilst remaining outside the building structure.

DESIGN FEATURES

- › Certified under the Secured By Design scheme
- › Tested to PAS 24
- › Green guide rated A
- › Integrated deep head profiles for ease of trickle ventilation
- › Unique polyamide thermal break design to improve thermal performance
- › A clean, flat appearance to give a true contemporary aesthetic
- › Design allows the windows to be pivoted without intruding the internal building line

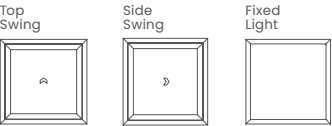
OPTIONS

- › Glazing 24mm – 28mm
- › Available in a range of single or dual colour and anodised finishes
- › Available in the following aesthetics: Bay, Contemporary and Chamfered
- › Available in the following configurations: top swing, side swing, fixed light and multi-light
- › Dedicated fixing straps for ease of installation
- › Full range of customisable hardware available

SPECIFICATIONS

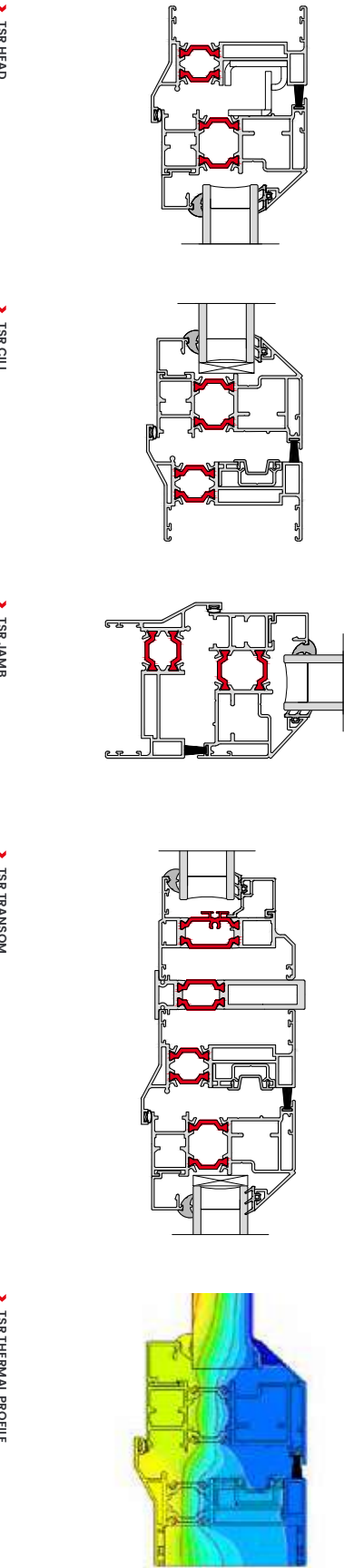
<strong>Performance* and accreditations</strong>	
U-Value (Double Glazing) (Ug: 1.0 W/m²K)	1.7 W/m²K
BRE Green Guide Rating	A Rated
Air Permeability	Class 4 (600 Pa)
Water Tightness	Class 6a (250 Pa)
Wind Resistance	Class A5 (2000 Pa)
Security	PAS 24 & SBD
3rd Party Certification Q-Mark	✓
<strong>SYSTEM</strong>	
Depth	70mm
<strong>Configurations</strong>	
Opening	Open-Out
Top Swing	✓
Side Swing	✓
Fixed Light	✓
Multi-Light	✓
<strong>Size and weight limits</strong>	
<strong>Top Swing</strong>	
Max Size (mm)	1400w x 1400h
Min. Size (mm)	300w x 504h
Max Weight	60kg
<strong>Fixed Light</strong>	
Max Weight	250kg
<strong>Glazing</strong>	
Glazing Options	Internal
Glazing Thickness	24mm-28mm
<strong>System Features</strong>	
Single Colour	✓
Dual Colour	✓
Textured Finish	✓
Anodised Finish	✓
Multi-Point Locking	✓
Sightline (Frame To Vent)	103mm
Sightline (Vent To Mullion)	161mm

CONFIGURATIONS



CAD CROSS SECTIONS AND THERMAL PROFILE

Additional details are available on request.



\* Performance data based on CEN size for Building Regulations. For full test performance details please contact Technical Services. AluK recommends checking all system performance for any scheme prior to use.



# C70S Window

OPEN-OUT DETAILS



OPEN-IN DETAILS



Beautifully engineered and brilliantly functional, the C70S delivers class-leading performance with U-values of 1.3 W/m<sup>2</sup>K, advanced water tightness and a range of features to simplify fabrication and installation.

Meeting and exceeding the key thermal, acoustic and performance demands of the commercial specifiers, the C70S is the perfect aluminium solution for residential and commercial projects.

DESIGN FEATURES

- › Universal EPDM carrier groove – allows clip-in EPDM strip and direct lug fixing to be used on all outer frames, frame extenders and sub cill profiles
- › Outer Frames, Transoms/Mullions, Beads, Gaskets, Ancillary profile parts used across both Open-in and Open-out
- › Consistent sightlines with 58BW system offering maximum project flexibility
- › Euro groove (16mm full depth) allowing for a wider choice of hardware
- › 5-day lead time in 9910HG, 7016M, 9005M and key dual colour options

OPTIONS

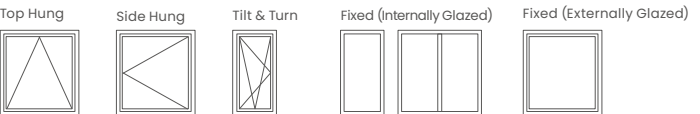
- › Three levels of insulation: standard, partial and HI
- › Glazing options 24mm-50mm
- › Side Hung, Top Hung, Fixed Light & Tilt Before Turn configurations available
- › Trickle ventilation available



SPECIFICATIONS

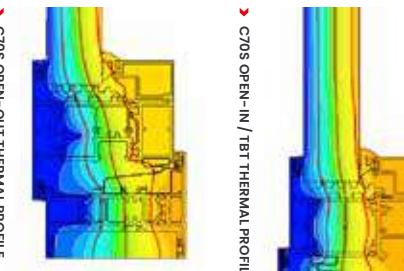
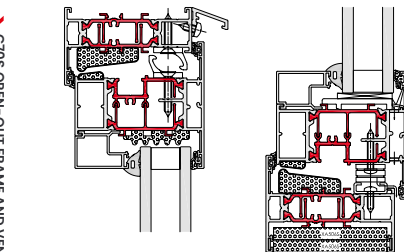
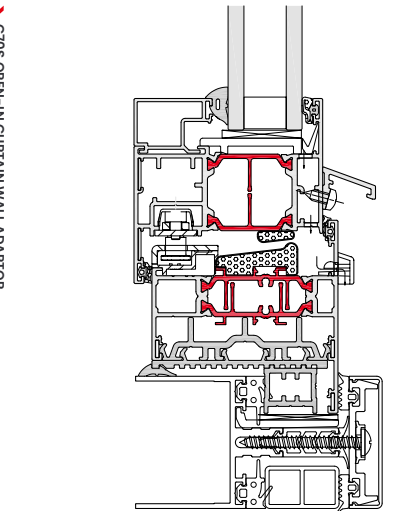
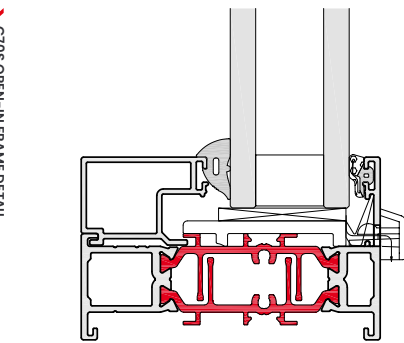
Performance and accreditations	C70S HI Open-in	C70S HI Open-out
Uw (Double Glazing)	1.3W/m²k	1.3W/m²k
Uw (Triple Glazing)	1.1W/m²k	1.1W/m²k
Window Energy Rating	A Rated	A Rated
Air Tightness (Pa)	Class 4 (600Pa)	Class 4 (600Pa)
Water Tightness (Pa)	E900 (900Pa)	E1500 (1500Pa)
Wind Load (Pa)	Class E2400 (2400Pa)	Class E2400 (2400Pa)
Security	PAS 24 & SBD	PAS 24 & SBD
<b>System</b>		
Depth	70mm	70mm
<b>Configurations</b>		
Top Hung	-	✓
Side Hung	✓	✓
Tilt before Turn	✓	-
Bottom Hung	✓	✓
Fixed Light - internally glazed (Reversers available)	✓	✓
Fixed Light - externally glazed (Reversers available)	✓	✓
<b>Size and weight limits</b>		
<b>Top Hung</b>		
Max Size (mm)	1680w x 2500h	1680w x 2500h
Min. Size (mm)	320w x 267h	320w x 267h
Max Weight	180kg	180kg
<b>Side Hung</b>		
Max Size (mm)	1000w x 1680h	1000w x 1680h
Min. Size (mm)	300w x 320h	300w x 320h
Max Weight	55kg	55kg
<b>Tilt &amp; Turn</b>		
Max Size (mm)	1300w x 2300h	1300w x 2300h
Min. Size (mm)	480w x 375h	480w x 375h
Max Weight	130kg	130kg
<b>Fixed Light</b>		
Max Size (mm)	2300w x 2300h	2300w x 2300h
Min. Size (mm)	300w x 300h	300w x 300h
Max Weight	300kg	300kg
<b>Glazing</b>		
Glazing panel options: double and triple	24mm - 50mm	24mm - 50mm
<b>System Features</b>		
Single Colour	✓	✓
Dual Colour	✓	✓
Anodised	✓	✓
Textured	✓	✓
Locking Handles	✓	✓
Friction Hinges	-	✓
Butt Hinges	-	✓
Groove type	PVC Euro 16mm	PVC Euro 16mm
Variable Handle Position	✓	✓
Trickle ventilation	✓	✓
Sightlines	89mm	89mm
Frame to Vent	89mm	89mm
Vent to Mullion	103mm	103mm
Fixed Light	43mm	43mm

CONFIGURATIONS



CAD CROSS SECTIONS AND THERMAL PROFILE

Additional details are available on request.





# Door systems

Engineered to integrate seamlessly with our window system range, our aluminium door systems remain our most popular products and provide unrivalled safety, security and installation simplicity.

Each door system has its own distinct look and feel, offering varying levels of performance, profile depth and glazing area.

However, while our designs may differ you'll find our materials and manufacturing processes are as reliable as ever. Our fabricating partners can benefit from a 10 year guarantee.

In addition to meeting the needs of every application type, our doors also support the current industry trend for refurbishment over replacement.

This allows fabricators and installers to provide the additional light and space their customers want, in the most fitting way possible.







# 58BD Entrance Door



Available in a wide range of styles and formats, our stylish aluminium entrance door system is suitable for both light and medium-duty use.

Designed with security and flexibility front of mind, every door in the range is available in single and double configurations making them ideal for almost any application.

DESIGN FEATURES

- › Certified under the Secured By Design scheme
- › Tested to PAS 24
- › Multi-point locking mechanism
- › Designed to incorporate standard and security hardware using the same prep detail
- › Cloaking feature conceals lock and prevents any access to locking points

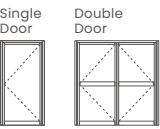
OPTIONS

- › Glazing 24mm – 40mm
- › 58mm or 70mm frame depth to accommodate varying types of applications
- › Low threshold option for Part M – Building regulation
- › Available in a range of single or dual colour and anodised finishes
- › Available for new build or refurbishment projects
- › Available in single or double door configuration

SPECIFICATIONS

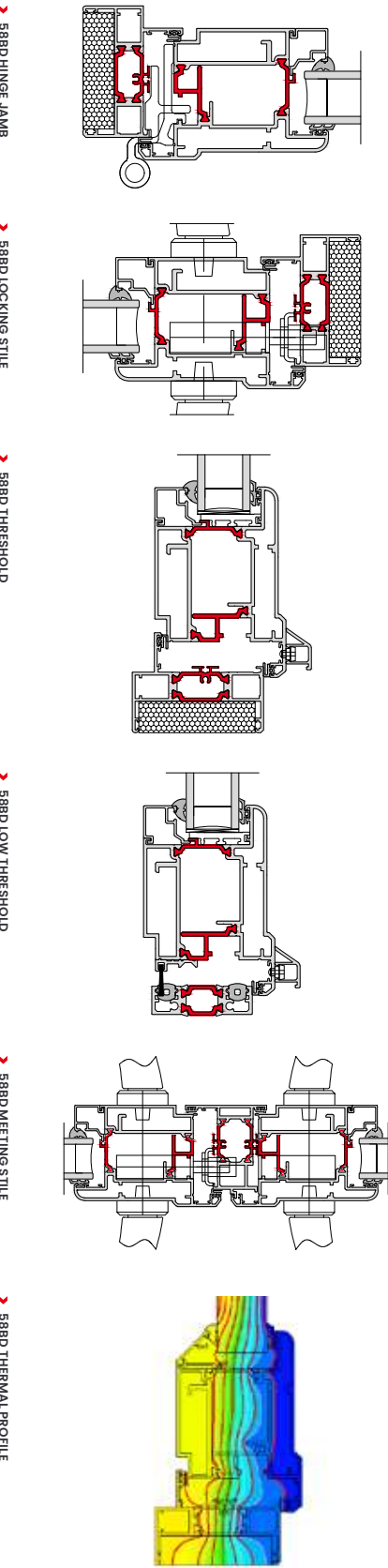
	Single Open-In	Single Open-Out	Double Open-In	Double Open-Out
<b>Performance*and accreditations</b>				
U-Value (Double Glazing) (Ug: 1.0 W/m²K)	1.7 W/m²K	1.7 W/m²K	1.7 W/m²K	1.7 W/m²K
U-Value (Triple Glazing) (Ug: 0.7 W/m²K)	1.4 W/m²K	1.4 W/m²K	1.5 W/m²K	1.5 W/m²K
Air Permeability	Class 4 (600 Pa)	Class 4 (600 Pa)	Class 2 (300 Pa)	Class 2 (300 Pa)
Water Tightness	Class 3a (100 Pa)	Class 7a (300 Pa)	Class 7a (300 Pa)	Class 9a (600 Pa)
Wind Resistance	Class A3 (1200 Pa)	Class AE2400 (2400 Pa)	Class A2400 (2400 Pa)	Class A2400 (2400 Pa)
Building Regulations Part L Compliant	✓	✓	✓	✓
Building Regulations Part M Compliant	✓	✓	✓	✓
Security	PAS 24 & SBD	PAS 24 & SBD	PAS 24 & SBD	PAS 24 & SBD
Durability EN1191 Category	50,000 Cycles	50,000 Cycles	50,000 Cycles	50,000 Cycles
3rd Party Certification Q-Mark	✓	✓	✓	✓
<b>System</b>				
Depth	58mm – 70mm	58mm – 70mm	58mm – 70mm	58mm – 70mm
<b>Size and weight limits</b>				
Maximum Door Size (mm)	1200w x 2400h	1200w x 2400h	2400w x 2400h	2400w x 2400h
Maximum Door Weight	3 Hinges 67.5kg 4 Hinges 90kg	3 Hinges 67.5kg 4 Hinges 90kg	3 Hinges 67.5kg 4 Hinges 90kg	3 Hinges 67.5kg 4 Hinges 90kg
<b>Glazing</b>				
Glazing Thickness	24mm-40mm	24mm-40mm	24mm-40mm	24mm-40mm
<b>System Features</b>				
Single Colour	✓	✓	✓	✓
Dual Colour	✓	✓	✓	✓
Textured Finish	✓	✓	✓	✓
Anodised Finish	✓	✓	✓	✓
Thermally Broken	✓	✓	✓	✓
Sightline (Head)	129.5mm	129.5mm	129.5mm	129.5mm
Sightline (Cill)	111mm	111mm	111mm	111mm
Sightline (Jamb)	129.5mm	129.5mm	129.5mm	129.5mm
Sightline (Meeting Stile)	n/a	n/a	209.5mm	209.5mm
Panel Door	✓	✓	✓	✓
Multi-Point Locking	✓	✓	✓	✓
Barrel Hinges	✓	✓	✓	✓
Low Threshold	✓	✓	✓	✓

CONFIGURATIONS



CAD CROSS SECTIONS AND THERMAL PROFILE

Additional details are available on request.



\* Performance data based on CEN size for Building Regulations. For full test performance details please contact Technical Services. AluK recommends checking all system performance for any scheme prior to use.



# 58BD

## Flush Entrance Door



Available in a wide range of styles and formats, our stylish aluminium entrance door system is suitable for both light and medium-duty use.

Designed with security and flexibility front of mind, every door in the range is available in single and double configurations making them ideal for almost any application.

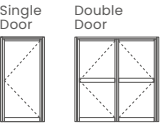
DESIGN FEATURES

- › Accepts 24mm – 40mm double or triple glazing
- › Max vent weight 90kg
- › Max Frame Height 2160mm
- › Multi-point locking mechanism
- › Available in single and dual colour

SPECIFICATIONS

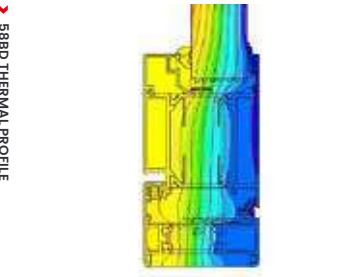
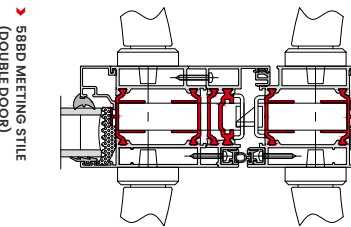
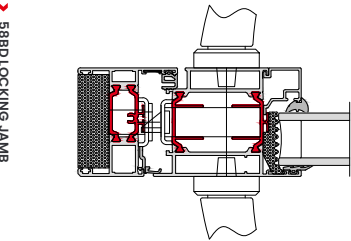
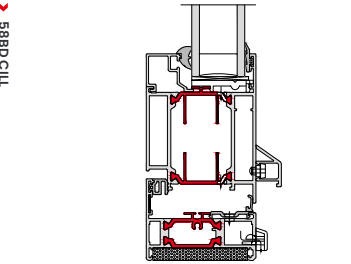
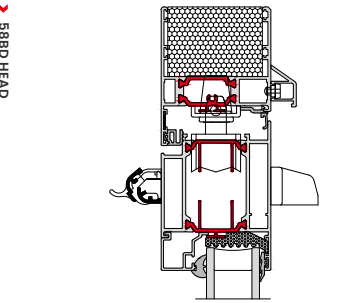
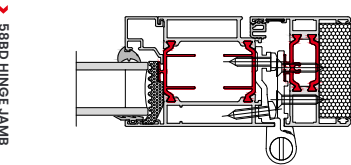
	Single Open-In	Single Open-Out	Double Open-In	Double Open-Out
<b>Performance* and accreditations</b>				
U-Value (Double Glazing) (Ug: 1.0 W/m²K)	1.6 W/m²K	1.7 W/m²K	1.7 W/m²K	1.6 W/m²K
U-Value (Triple Glazing) (Ug: 0.7 W/m²K)	1.4 W/m²K	1.4 W/m²K	1.4 W/m²K	1.4 W/m²K
Air Permeability	Class 2 (300 Pa)	Class 2 (300 Pa)	Class 2 (300 Pa)	Class 1 (150 Pa)
Water Tightness	Class 9a (600 Pa)	Class E1950 (1950 Pa)	Class 4a (150 Pa)	Class 7a (300 Pa)
Wind Resistance	Class A3 (1200 Pa)	Class A3 (1200 Pa)	Class 2 (800 Pa)	Class 2 (800 Pa)
Building Regulations Part L Compliant	✓	✓	✓	✓
Security	PAS 24 & SBD	PAS 24 & SBD	PAS 24 & SBD	PAS 24 & SBD
Durability EN1191 category	50,000 Cycles	50,000 Cycles	50,000 Cycles	50,000 Cycles
3rd Party Certification Q-Mark	✓	✓	✓	✓
<b>System</b>				
Depth	58mm – 70mm	58mm – 70mm	58mm – 70mm	58mm – 70mm
<b>Size and weight limits</b>				
Maximum Door Leaf Size (mm)	1200w x 2400h	1200w x 2400h	2400w x 2400h	2400w x 2400h
Maximum Door Leaf Weight	2 Hinges 100kg 3 Hinges 125kg 4 Hinges 150kg	2 Hinges 100kg 3 Hinges 125kg 4 Hinges 150kg	2 Hinges 100kg 3 Hinges 125kg 4 Hinges 150kg	2 Hinges 100kg 3 Hinges 125kg 4 Hinges 150kg
<b>Glazing</b>				
Glazing Thickness	24mm-40mm	24mm-40mm	24mm-40mm	24mm-40mm
<b>System Features</b>				
Single Colour	✓	✓	✓	✓
Dual Colour	✓	✓	✓	✓
Textured Finish	✓	✓	✓	✓
Anodised Finish	✓	✓	✓	✓
Thermally Broken	✓	✓	✓	✓
Sightlines	119mm Max	119mm Max	175mm (Meeting Stile)	175mm (Meeting Stile)
Panel Door	✓	✓	✓	✓
Multi-Point Locking	✓	✓	✓	✓
Barrel Hinges	✓	✓	✓	✓

CONFIGURATIONS



CAD CROSS SECTIONS AND THERMAL PROFILE

Additional details are available on request.



\* Performance data based on CEN size for Building Regulations. For full test performance details please contact Technical Services. ALUK recommends checking all system performance for any scheme prior to use.



# A refurb that's bang on trend

The owners of a stunning refurbishment in Whitstable Kent were right on trend when they chose the colours for the AluK windows and doors which have been installed throughout.

Ultimate Grey and Illuminating Yellow have been declared as the Pantone Colours of the Year for 2021 and that grey and yellow combination was used to create a striking contrast with the contemporary cladding and render.

The owners had installed AluK products in their previous property and had been impressed with the quality, style and durability, particularly for a coastal location. They had no hesitation in choosing them again this time around; and worked with AluK fabricator Rhino Aluminium and installer SG Installations to complete the design and installation.

The house had been standing empty for two years before work started and had been water damaged during that time, so all but a couple of walls were demolished as part of a complete, nine-month refurbishment. The aim was to make the most of the sizeable plot without having too much impact on the surrounding properties.

Using the architect's drawings, Rhino Aluminium recommended windows in AluK's slim sightline 58BW system throughout, four tested, tried and trusted BSF70

bi-folding doors and a structurally bonded aluminium panel front door in a suited AluK 58BD frame. This specification enabled the owners to optimise the light coming into the house and garden room and open up the rear as much as possible to make the most of the garden.

The large expanses of glass meant the thermal efficiency of the AluK windows and doors was paramount to ensure that the house could comply with Part L1A of the Building Regs. Double glazed, the BRE Green Guide A rated 58BW windows and BSF70 bi-folds achieved U-Values of 1.4W/m<sup>2</sup>K.

Andrew McCann from Rhino Aluminium commented: "We worked with the owners from a very early stage in the project so that they could manage the project and the budget as effectively as possible. One key recommendation we made was to upgrade the entrance door powder coating to a textured finish. The entrance to any property is the focal point of the exterior and particularly in this stunning yellow, so a textured finish Rhino door added a touch of distinctive elegance."





# GT55 TB

## Commerical Door



An effective choice for shop fronts, entrances and ground floor treatments, the GT55 TB provides exceptional security and performance. Delivering high levels of energy efficiency thanks to its thermally broken profiles, the system has been designed in a ladder frame construction to provide a flexible solution for low-rise glazing applications. This means sealed units of 6mm up to 28mm can be accommodated to improve thermal and acoustic performance.

The system offers PAS 24 rating and is Secured By Design-accredited across a suite of configurations including single and double doors, screening, and side and fan lights. It also features a range of PAS 24 hardware including panic, mechanical and electro-mechanical locking for both single and double doors. Easily integrated with other AluK systems, the GT55 TB includes an integrated range of high traffic, anti-finger trap doors suitable for single storey applications.

DESIGN FEATURES

- › Pocket or bead glazed for ease of site glazing
- › 110mm frame depth to accommodate varying types of applications
- › Slim 55mm profile width for increased glazing and light transmission
- › Fully compatible with other AluK systems
- › Mullion drainage options
- › The most comprehensive PAS 24 and Secured By Design certified system on the market today
- › Robust mechanical connection detail between rail and stile for ultimate strength in high traffic environments
- › GT55 TB can be used to create louvred and panelled doors with a variation of inserts

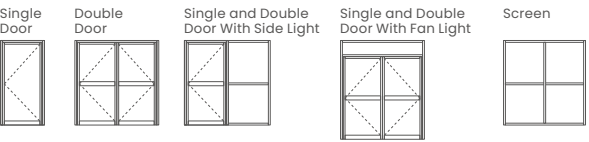
OPTIONS

- › Wide range of hardware available offering full customisation
- › Available in single or dual colour polyester powder coating, texture and anodised finishes
- › Ability to accommodate various architectural pull handles from other manufacturers

SPECIFICATIONS

Performance and accreditations	Single	Double	GT55 TB Screening
U-Value (Double Glazing) (Ug: 1.0 W/m²K)	1.9 W/m²K	1.8 W/m²K	1.3 W/m²K
U-Value (Triple Glazing) (Ug: 0.7 W/m²K)	1.7 W/m²K	1.6 W/m²K	1.1 W/m²K
Air Permeability	-	-	Class 4 (600 Pa)
Water Tightness	-	-	Class E1200 (1200 Pa)
Wind Resistance	-	-	Class B4 (1600 Pa)
Durability EN 1191 Category	50,000 Cycles	50,000 Cycles	-
Security	PAS 24 & SBD	PAS 24 & SBD	PAS 24 & SBD
3rd Party Certification Q-Mark	✓	✓	✓
System			
Depth	110mm	110mm	110mm
Size and weight limits			
Maximum Door Leaf Size (mm)	1250w x 2400h	2500w x 2400h	-
Maximum Door Leaf Weight	110kg	110kg	-
Glazing			
Glazing Thickness (Single Glazing)	-	-	6mm - 12mm
Glazing Thickness (Double Glazing)	24mm - 40mm	24mm - 40mm	24mm - 30mm
System Features			
Single Colour	✓	✓	✓
Dual Colour	✓	✓	✓
Textured Finish	✓	✓	✓
Anodised Finish	✓	✓	✓
Thermally Broken	✓	✓	✓
Fire Exit option	✓	✓	✓
Part M compliant low threshold	✓	✓	-
Part M compliant closer	✓	✓	✓
Anti-Finger Trap	✓	✓	-
Sightlines	145mm	176mm	55mm
Mid-Rail and Lay Bar	✓	✓	✓
Panel Door	✓	✓	-
Multi-Point Locking	✓	✓	-
Single Point Locking	✓	✓	-
Concealed Hinges	✓	✓	-
Barrel Hinges	x	x	-
Electro Mechanical Locking	✓	✓	-

SBD CONFIGURATIONS

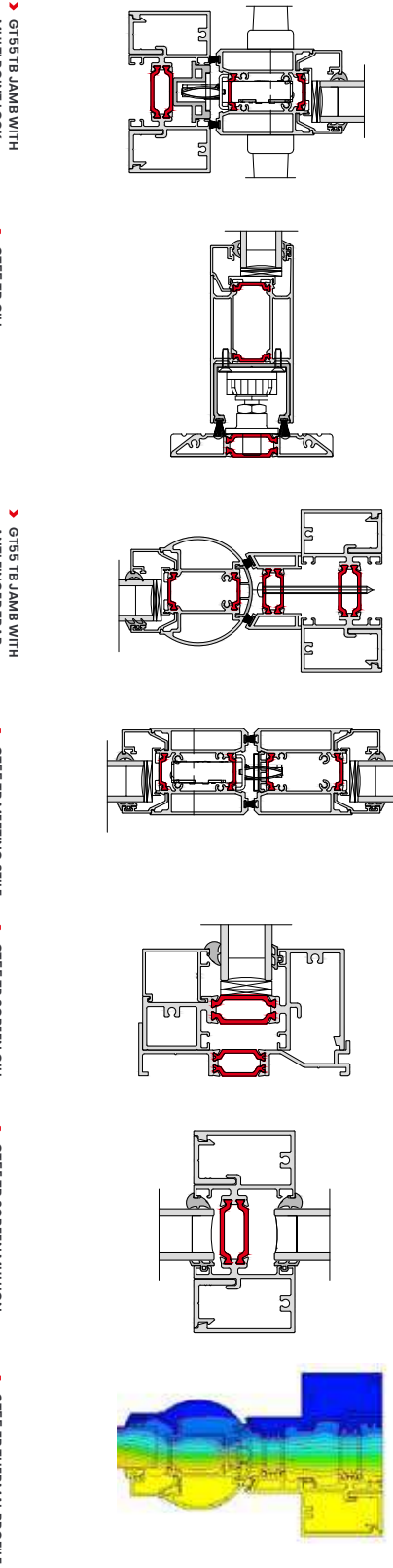


PAS 24 SECURITY RATED LOCK

AluK Part Ref	Relevant	Single Door				Double Door			
		Min (w)	Min (h)	Max (w)	Max (h)	Min (w)	Min (h)	Max (w)	Max (h)
Electronic access locking	1,2,3,4,5	500	-	1200	2400	500	-	1200	2400
Panic Doors (Dorma)	1,2,3,4,5	500	-	1200	2400	500	-	1200	2400
Electronic access panic doors (Dorma)	1,2,3,4,5	500	-	1200	2400	500	-	1200	2400
Panic Doors (Sentinel)	1,3,5	500	1882*	1200	2400	Not available for Double Door			
Manual locking	1,2,3,4,5	500	1882*	1000	2400	500	1882*	1000	2400

CAD CROSS SECTIONS AND THERMAL PROFILE

Additional details are available on request.





# GT55 NI Commerical Door



One of the most secure swing doors available on the market today, the GT55 NI has been specifically designed for high traffic environments where no insulation is required. This makes it a very robust and highly cost-effective choice when specifying applications such as shopping complexes and retail centres that require significant partitioning without the need for thermal insulation.

The GT55 NI can be easily integrated with our ground floor treatment system and is available in single colour options, with a choice of polyester powder coating and anodised finishes. A full range of security and customisable hardware is also available to suit the specific demands of your design.

DESIGN FEATURES

- › Pocket or bead glazed for ease of site glazing
- › 110mm frame depth to accommodate varying types of applications
- › Slim 55mm frame profile for increased glass appearance
- › Ladder frame construction to enable easy on-site installation
- › Fully compatible with other AluK systems
- › Mullion drainage

OPTIONS

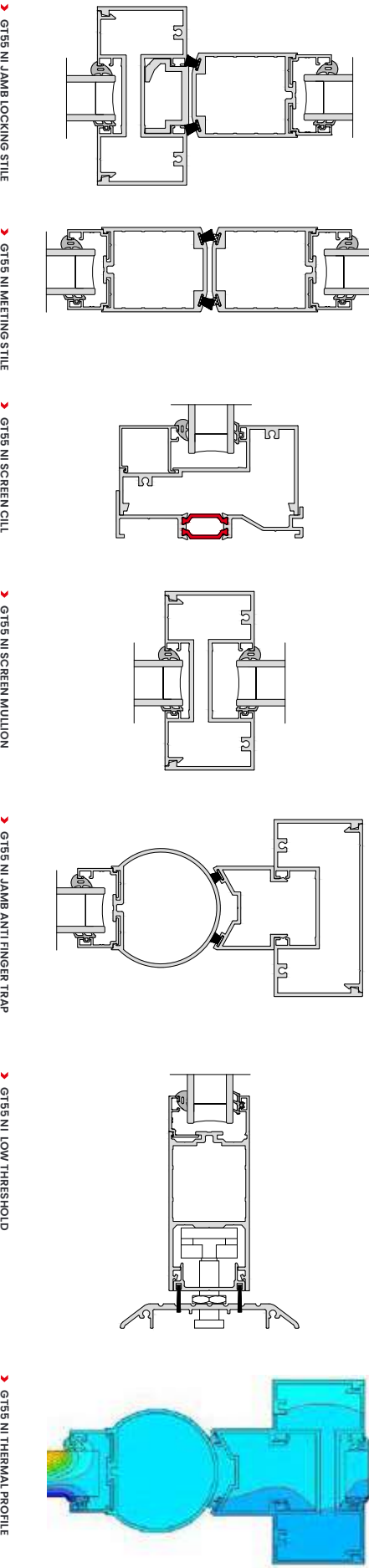
- › Can accommodate 6mm–28mm sealed units for acoustic performance
- › Wide range of hardware available offering full customisation
- › Available in single colour polyester powder coating, texture and anodised finishes
- › Internal and external screen application available

SPECIFICATIONS

Performance and accreditations	Single	Double	GT55 NI Screening
U-Value (Double Glazing) (Ug: 1.0 W/m²K)	3.6 W/m²K	3.0 W/m²K	2.0 W/m²K
U-Value (Triple Glazing) (Ug: 0.7 W/m²K)	3.4 W/m²K	2.8 W/m²K	1.7 W/m²K
Air Permeability	-	-	Class 4 (600 Pa)
Water Tightness	-	-	Class 8A (450 Pa)
Wind Resistance	-	-	Class 5 (2000 Pa)
Durability EN 1191 Category	50,000 Cycles	50,000 Cycles	-
System			
Depth	110mm	110mm	110mm
Size and weight limits			
Maximum Door Leaf Size (mm)	1250w x 2400h	2500w x 2400h	-
Maximum Door Leaf Weight	80kg	80kg	-
Glazing			
Glazing Thickness (Single Glazing)	6mm - 12mm	6mm - 12mm	6mm - 12mm
Glazing Thickness (Double Glazing)	24mm - 28mm	24mm - 28mm	24mm - 28mm
System Features			
Single Colour	✓	✓	✓
Dual Colour	x	x	x
Textured Finish	✓	✓	✓
Anodised Finish	✓	✓	✓
Fire Exit option	✓	✓	✓
Part M compliant low threshold	✓	✓	-
Anti-Finger Trap	✓	✓	-
Sightlines	144mm	176mm	55mm
Mid-Rail and Lay Bar	✓	✓	✓
Panel Door	✓	✓	-
Single Point Locking	✓	✓	-
Concealed Hinges	✓	✓	-
Barrel Hinges	✓	✓	-
Electro Mechanical Locking	✓	✓	-
Automatic Door	✓	✓	-

CAD CROSS SECTIONS AND THERMAL PROFILE

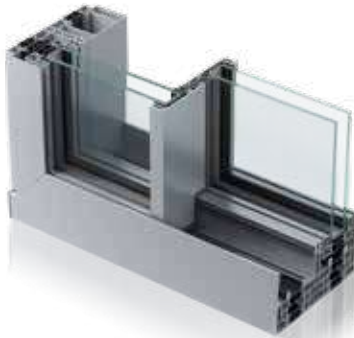
Additional details are available on request.







# Infinium Sliding Door



Infinium brings together indoor and outdoor living spaces in exquisite harmony.

Free-flowing spaces are created thanks to stunningly slim sightlines that bathe every surface with natural light. Uninterrupted panoramic landscapes provide complete escapism, without need of escape.

While seamlessly integrated floor-to-ceiling glazing reflects the clarity of thought behind every inspired design decision.

DESIGN FEATURES

- › Fully concealed outer-frame
- › 21mm central interlock
- › One or more opening panels with large width dimensions up to 3000mm and height dimensions up to 3500mm
- › Holds up to 400 kg panel weight

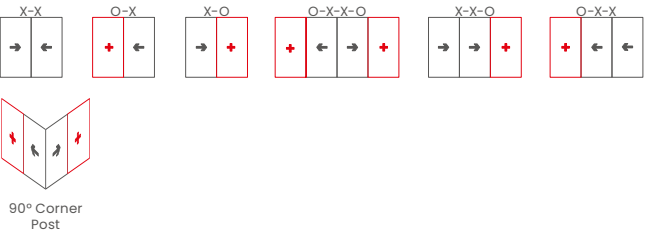
OPTIONS

- › Available in double or triple track
- › Glazing options of 38mm – 52mm
- › Floating corner post option for larger opening space
- › Single colour available as standard
- › Available in a range of configurations
- › Double or triple glazing solutions available on the same outer-frame

SPECIFICATIONS

<b>Performance and accreditations</b>	
U-Value (Double Glazing)	1.3 W/m²K
U-Value (Triple Glazing)	< 1.0 W/m²K
Air Permeability	Class 4 (600 Pa)
Water Tightness	Class 8A (450 Pa)
Wind Resistance	Class C3 (1200 Pa up to 160 km/h)
Cycle Testing	25,000
<b>System depth</b>	
Duo Rail	175mm
Tri Rail	267mm
<b>Configurations</b>	
Opening	Inline Sliding
Dual Rail	✓
Tri Rail	✓
<b>Size and weight limits</b>	
Max Sash Height	3500mm
Max Sash Width	3000mm
Max Sash Weight	400kg
<b>Glazing</b>	
Glazing Thickness	38mm-52mm
<b>System features</b>	
Single Colour	✓
Textured Finish	✓
Anodised Finish	✓
Multi-Point Locking	✓
Sightlines - Interlock	21mm

CONFIGURATIONS

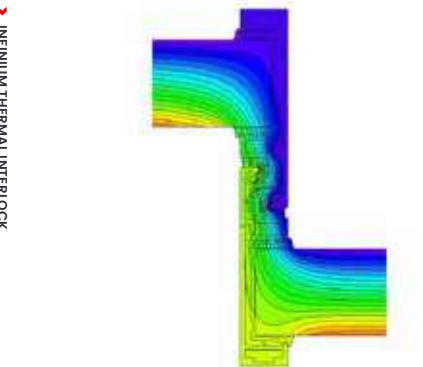
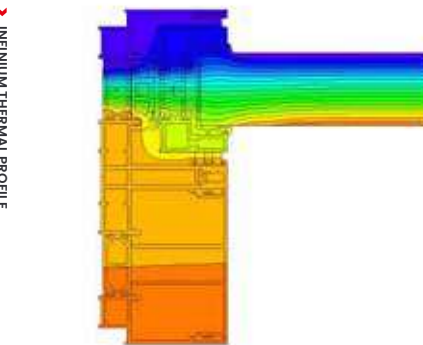
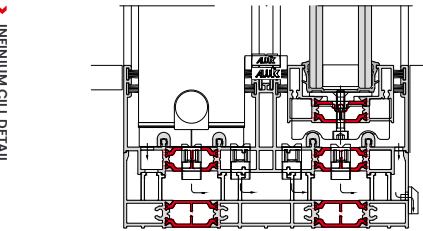
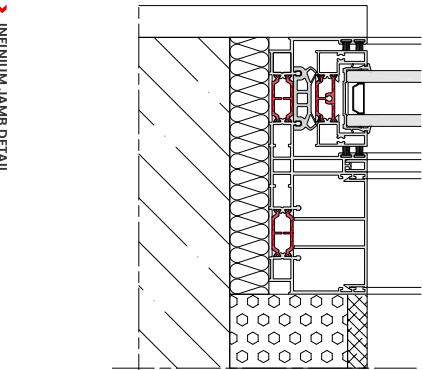
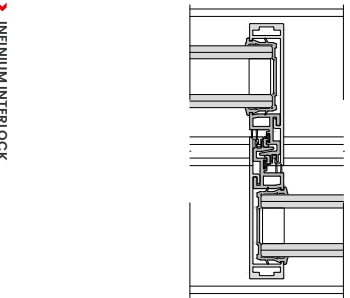


KEY



CAD CROSS SECTIONS AND THERMAL PROFILE

Additional details are available on request.





# SC156

## Lift & Slide Door



A premium sliding door with slim sightlines, available in a variety of sliding configurations using single and double track systems.

The SC156 offers high levels of performance, from thermal U-values of 1.0W/m2K (triple glazed), to superior water tightness on the market (1500 Pa) and with panel weights of up to 300Kg.

Smooth operation is guaranteed through the use of the highest quality fittings.

DESIGN FEATURES

- › Accepts 24mm – 50mm double or triple glazing
- › Max 300kg panel weight
- › Low threshold of 23mm
- › Exceptional AWW ratings

OPTIONS

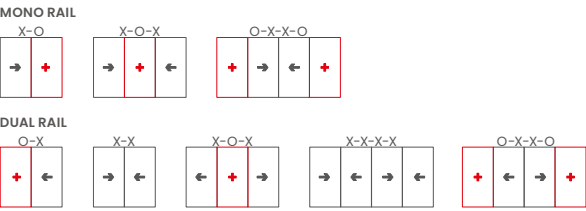
- › Slimmer sightline of 50mm available
- › Multiple sliding configurations
- › Mono or Dual rail options
- › Available in single and dual colour; any other RAL also available
- › Range of hardware and security features

SPECIFICATIONS

Performance* and accreditations	SC156	SC156 SLIM
U-value (Double Glazing) (Ug = 1.0 W/m²K) (Mono Rail)	1.4 W/m²K	1.4 W/m²K
U-value (Triple Glazing) (Ug = 0.6 W/m²K) (Mono Rail)	1.0 W/m²K	1.0 W/m²K
U-value (Double Glazing) (Ug = 1.0 W/m²K) (Dual Rail)	1.5 W/m²K	1.6 W/m²K
U-value (Triple Glazing) (Ug = 0.6 W/m²K) (Dual Rail)	1.2 W/m²K	1.3 W/m²K
Air Permeability	Class 4 (600 Pa)	Class 4 (600 Pa)
Water Tightness	Class E1500 (1500Pa)	Class E1500 (1500Pa)
Wind Resistance	Class 4 (1600 Pa)	Class 4 (1600 Pa)
Acoustic Performance	Rw(Ct;Ctr) = 44 (-2;-6) dB	Rw(Ct;Ctr) = 44 (-2;-6) dB
Security	PAS 24	PAS 24
<b>System</b>		
Depth	156mm	50mm
<b>Configurations</b>		
Opening	Lift & Slide	Lift & Slide
Mono Rail	✓	✓
Dual Rail	✓	✓
<b>Size and weight limits</b>		
Max Frame Height	3100mm	3100mm
Max Vent Height	3100mm	3100mm
Max Vent Width	2700mm	2700mm
Max Vent Weight*	300kg	300kg
<b>Glazing</b>		
Glazing Options	Internal	Internal
Glazing Thickness	24mm-50mm	24mm-50mm
<b>System Features</b>		
Single Colour	✓	✓
Dual Colour	✓	✓
Textured Finish	✓	✓
Anodised Finish	✓	✓
Multi-Point Locking	✓	✓
Threshold	23mm	50mm
Sightlines	95mm	50mm

\* 300kg on standard roller sets, 400kg with additional roller set

CONFIGURATIONS

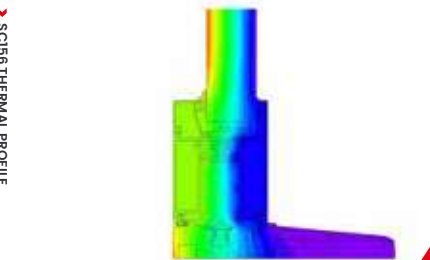
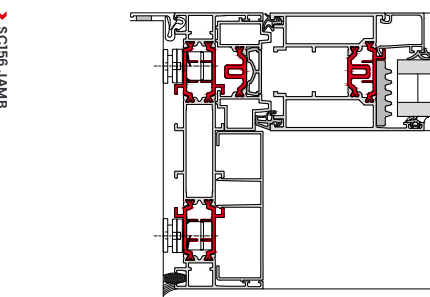
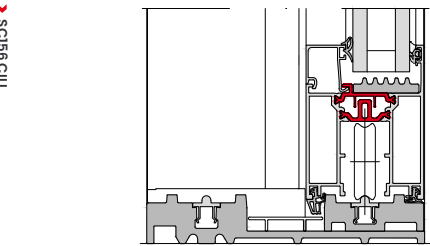
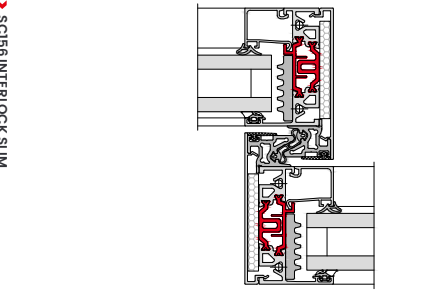
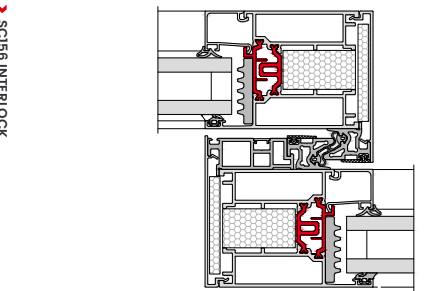
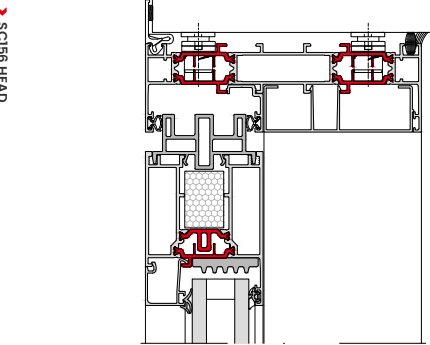


KEY



CAD CROSS SECTIONS AND THERMAL PROFILE

Additional details are available on request.



\* Performance data based on CEN size for Building Regulations. For full test performance details please contact Technical Services. AluK recommends checking all system performance for any scheme prior to use.



# BSC94

## Lift & Slide Door



For those looking for effortless operation, look no further than our premium lift and slide door. Its vital statistics are impossible to ignore. Thermal U-Values of 1.5W/m²K (triple glazed). Panel weights of up to 400Kg. Sightlines as little as 45mm.

The list goes on. As do the benefits, including multiple configurations and a wide choice of colour finishes.

DESIGN FEATURES

- Accepts 20mm – 31mm double glazing
- Max 400kg panel weight (double bogey)

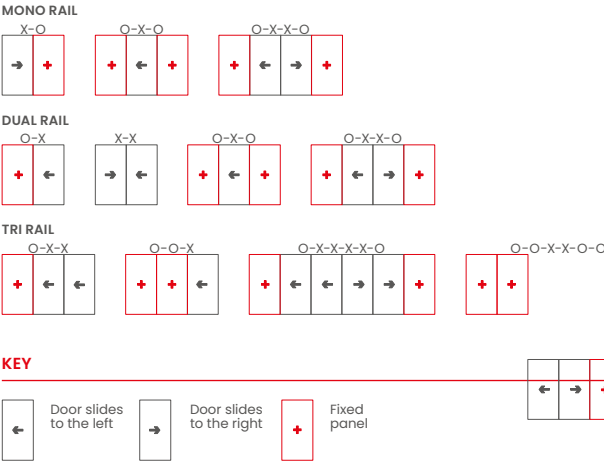
OPTIONS

- Available as Inline Sliding
- Slimmer sightline of 45mm available
- Multiple sliding configurations
- Mono or Dual rail options
- Available in single and dual colour
- Anodised finishes also available
- Range of hardware and security features

SPECIFICATIONS

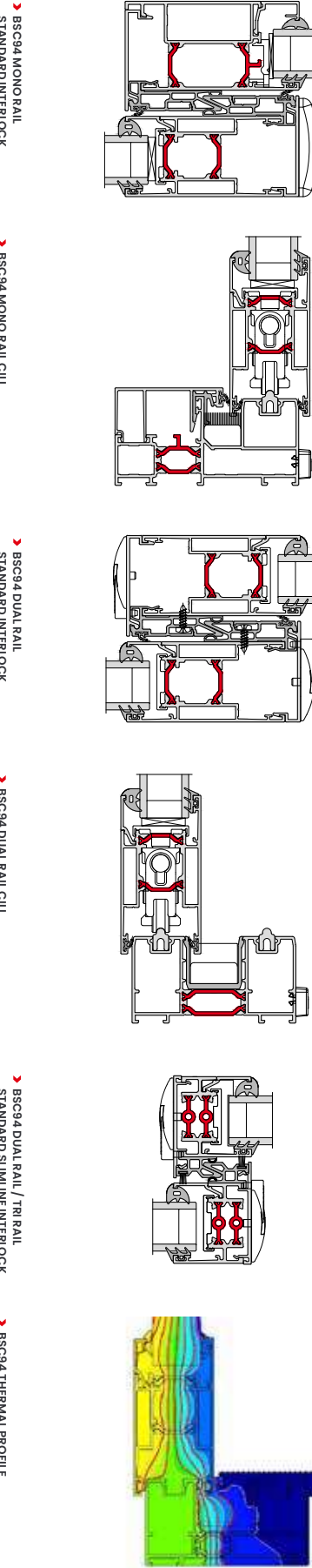
Performance* and accreditations	BSC94	BSC94 SLIM
U-Value (Double Glazing) (Ug = 1.0 W/m²K) (Mono Rail)	1.7 W/m²K	-
U-Value (Triple Glazing) (Ug = 0.7 W/m²K) (Mono Rail)	1.5 W/m²K	-
U-Value (Double Glazing) (Ug = 1.0 W/m²K) (Dual Rail)	1.9 W/m²K	1.9 W/m²K
U-Value (Triple Glazing) (Ug = 0.7 W/m²K) (Dual Rail)	1.7 W/m²K	1.6 W/m²K
BRE Green Guide Rating	C Rated	C Rated
Air Permeability	Class 4 (600 Pa)	Class 4 (600 Pa)
Water Tightness	Class 7a (300 Pa)	Class 7a (300 Pa)
Wind Resistance	C3 (1200 Pa)	C3 (1200 Pa)
Acoustic Performance	-	-
System		
Depth	94mm-155mm	94mm-155mm
Configurations		
Opening	Lift & Slide	Lift & Slide
Mono Rail	✓	x
Dual Rail	✓	✓
Tri Rail	✓	x
Size and weight limits		
Max Frame Height	3000mm	3000mm
Max Vent Width	2000mm	2000mm
Max Vent Weight	400kg	400kg
Glazing		
Glazing Options	Internal	Internal
Glazing Thickness	20mm-31mm	20mm-31mm
System Features		
Single Colour	✓	✓
Dual Colour	✓	✓
Textured Finish	✓	✓
Anodised Finish	✓	✓
Multi-Point Locking	✓	✓
Sightlines (Interlock)	100mm	45mm
Sightlines (Cill)	130.5mm	130.5mm
Sightlines (Head)	130.5mm	130.5mm
Sightlines (Jamb)	130.5mm	130.5mm

CONFIGURATIONS



CAD CROSS SECTIONS AND THERMAL PROFILE

Additional details are available on request.



\* Performance data based on CEN size for Building Regulations. For full test performance details please contact Technical Services. ALUK recommends checking all system performance for any scheme prior to use.



# BSC94

## In-line Sliding Door

Modern, versatile and customisable, the BSC94 Inline Sliding Door combines high performance with contemporary design to provide a reliable aluminium door system for almost any architectural project. Manufactured to the highest UK standards, this multi-configuration system can achieve thermal U-Values of 1.4W/m²K (triple glazed mono rail) and sightlines of as little as 45mm.

In addition to mono, dual and triple rail options, a comprehensive range of colours and anodised finishes is available for the system. The BSC94 also features an anti bimetal polyamide strip to allow for varying expansion rates, ensuring the future integrity of your design.

DESIGN FEATURES

- › Accepts 20mm – 31mm double glazing
- › Max 400kg panel weight
- › Certified under the Secured By Design scheme
- › Tested to PAS 24
- › Anti bi-metal polyamide strip to allow for varying expansion rates

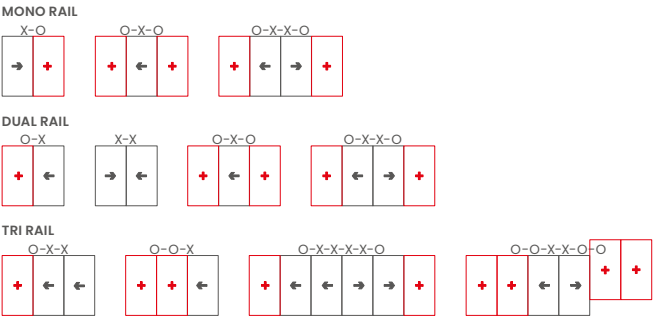
OPTIONS

- › Available as Lift & Slide
- › Slimmer sightline of 45mm available
- › Multiple sliding configurations
- › Mono, Dual or Tri rail options
- › Available in single and dual colour
- › Anodised finishes also available
- › Range of hardware and security features

SPECIFICATIONS

Performance* and accreditations	BSC94	BSC94 SLIM
U-Value (Double Glazing) (Ug = 1.0 W/m²K) (mono rail)	1.6 W/m²K	-
U-Value (Triple Glazing) (Ug = 0.7 W/m²K) (mono rail)	1.4 W/m²K	-
U-Value (Double Glazing) (Ug = 1.0 W/m²K) (dual Rail)	1.7 W/m²K	1.7 W/m²K
U-Value (Triple Glazing) (Ug = 0.7 W/m²K) (dual Rail)	1.5 W/m²K	1.5 W/m²K
BRE Green Guide Rating	C Rated	C Rated
Air Permeability	Class 4 (600 Pa)	Class 4 (600 Pa)
Water Tightness	Class 7a (300 Pa)	Class 7a (300 Pa)
Wind Resistance	C3 (1200 Pa)	C3 (1200 Pa)
Acoustic Performance	Rw (C;Ctr) 36 (-1;-3) dB**	-
Security	PAS 24 & SBD	x
<b>System</b>		
Depth	94mm-155mm	94mm-155mm
<b>Configurations</b>		
Opening	Inline Sliding	Inline Sliding
Mono Rail	✓	x
Dual Rail	✓	✓
Tri Rail	✓	✓
<b>Size and weight limits</b>		
Max Frame Height	3000mm	3000mm
Max Vent Width	2000mm	2000mm
Max Frame Height With Security Features	2600mm	x
Max Vent Weight	400kg	400kg
<b>Glazing</b>		
Glazing Options	Internal	Internal
Glazing Thickness	20mm-31mm	20mm-31mm
<b>System Features</b>		
Single Colour	✓	✓
Dual Colour	✓	✓
Textured Finish	✓	✓
Anodised Finish	✓	✓
Multi-Point Locking	✓	✓
Sightlines (Interlock)	85mm	45mm
Sightlines (Cill)	115.5mm	115.5mm
Sightlines (Head)	115.5mm	115.5mm
Sightlines (Jamb)	115.5mm	115.5mm

CONFIGURATIONS



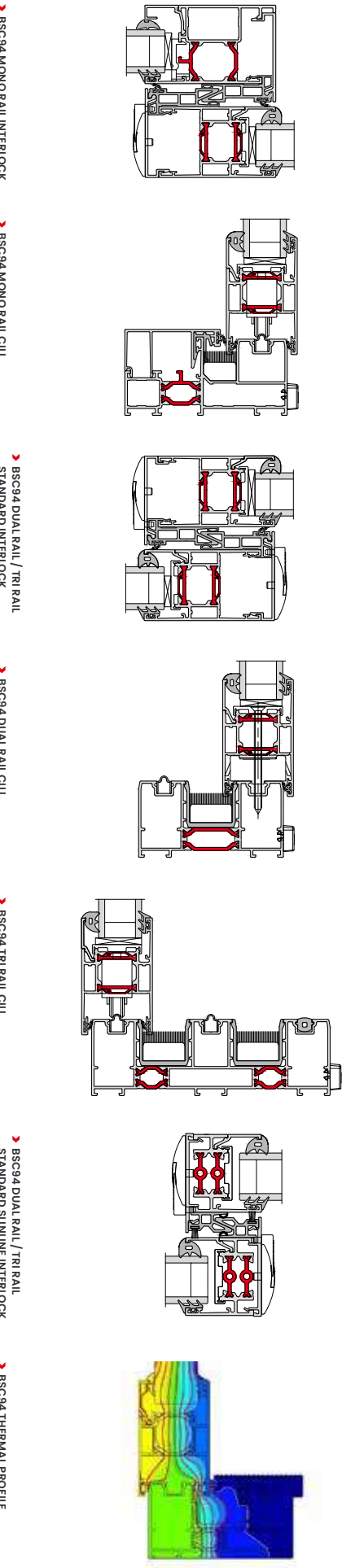
KEY



\* Performance data based on CEN size for Building Regulations. For full test performance details please contact Technical Services. Aluk recommends checking all system performance for any scheme prior to use.

CAD CROSS SECTIONS AND THERMAL PROFILE

Additional details are available on request.





# F82 PLUS Bifold Door



The F82 Plus Bifold Door System puts high performance and security front of mind, offering a wide range of configurations to support the bespoke requirements of your project. Multiple doors can be combined with open-in or open-out options in a variety of styles to create a wide expanse of opening.

The system is fully PAS 24 and Secured By Design-accredited, making it Document Q compliant. The full frame and cill have been designed to create a slimmer, symmetrical frame of 97mm combined with a reduced interlock sightline of 122mm, providing larger glazing areas without compromising performance. Thermal U-Values of 1.2 W/m²K (double glazed) and 0.9 W/m²K (triple glazed) assist with meeting the latest energy efficiency requirements.

Other key design features include a flush pop-out handle and contemporary traffic door handles. A new floating corner offers a true inside-out design, while the 110mm mid rail allows the creation of transoms in the door or solid panels in single and double doors for a uniform aesthetic.

DESIGN FEATURES

- Unique pop-up handle, cycle tested to 25,000 operations for up to 80 years of reliable use
- Integrated cill profile clips onto the outer frame sides, reducing sightlines
- Heavy-duty stainless steel compact rollers as standard
- Full symmetrical frame sightline of 97mm
- 122mm slimline interlock
- Larger glazing area

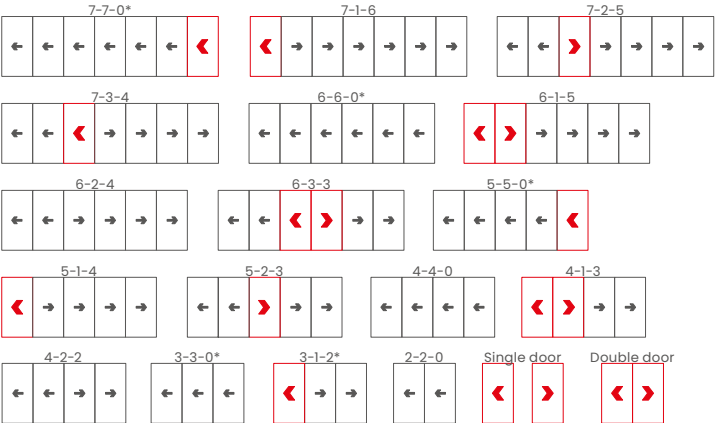
OPTIONS

- Square bead
- Glazing sizing range of 28mm-44mm
- Available in a range of opening configurations, including a floating corner
- Available in single or dual colour polyester powder coating, texture and anodised finishes
- All configurations available open-in and open-out
- 110mm midrail - make single or double doors using transoms or solid panels
- New sub cill range - position onto varying widths of construction using the 225mm, 150mm or 95mm options

SPECIFICATIONS

Performance and accreditations	Open-in	Open-out
U-Value (Double Glazing) (Ug: 1.0 W/m²K)	1.2 W/m²K	1.2 W/m²K
U-Value (Triple Glazing) (Ug: 0.7 W/m²K)	0.9 W/m²K	0.9 W/m²K
Air Permeability (Standard Threshold)	Class 3 (600 Pa)	Class 4 (600 Pa)
Water Tightness (Standard Threshold)	Class 5a (200Pa)	Class E900 (900 Pa)
Wind Resistance	Class B3 (1200Pa)	B3 (1200 Pa)
Security	PAS 24 & SBD	PAS 24 & SBD
System		
Depth	82MM	82mm
Configurations		
Opening	Open-In & Open-Out	Open-In & Open-Out
Size and weight limits		
Max Leaf Height	2500mm std/ 3000 mm*	2500mm std/ 3000 mm*
Max Leaf Width	1200mm	1200mm
Max Vent Weight	150kg	150kg
Glazing		
Glazing Options	Internal Bead	Internal Bead
Glazing Thickness	28mm-44mm	28mm-44mm
System Features		
Single Colour	✓	✓
Dual Colour	✓	✓
Textured Finish	✓	✓
Anodised Finish	✓	✓
Multi-Point Locking	✓	✓
Sightline (Head)	97mm	97mm
Sightline (Cill)	97mm	97mm
Sightline (Jamb)	97mm	97mm
Sightline (Meeting Stile)	122mm	122mm

CONFIGURATIONS



\*Opposite handling available on all configurations. For more options, refer to the Technical Manual.

KEY



OTHER OPTIONS AVAILABLE

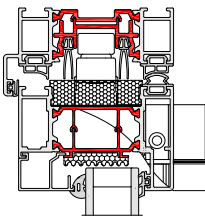


\*The maximum height and panel width for the F82 Folding Sliding Door System are co-dependent and also dictated by the design wind load where the doors are being installed. Based on the site design wind load that the doors are subjected to this will influence the maximum height and width [per panel] to which the doors can be manufactured.

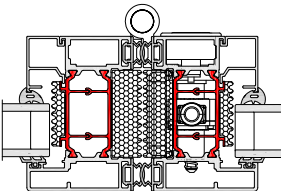
CAD CROSS SECTIONS AND THERMAL PROFILE

Additional details are available on request.

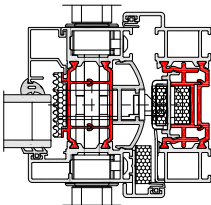
F82 PLUS HEAD



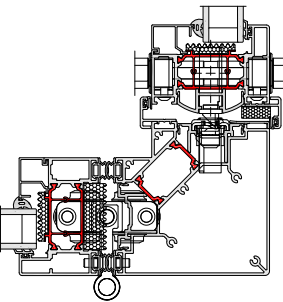
F82 PLUS INTERLOCK



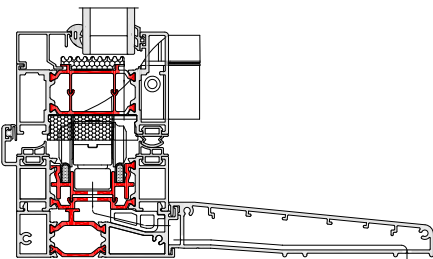
F82 PLUS LOCKING JAMB



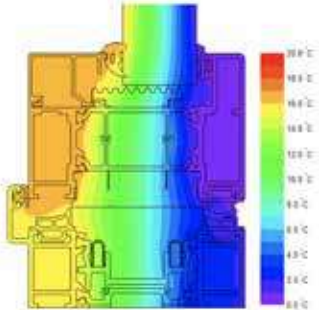
F82 PLUS FLOATING CORNER POST



F82 PLUS CILL



F82 PLUS THERMAL PROFILE





# F82 Bifold Door



The F82 Folding Door System puts high performance and security front of mind, offering a wide range of configurations to support the bespoke requirements of your project. Multiple doors can be combined with open-in or open-out options in a variety of styles to create a wide expanse of opening.

The system is fully PAS 24 and Secured By Design-accredited, making it Document Q compliant. The full frame and cill have been designed to create a slimmer, symmetrical frame of 97mm combined with a reduced interlock sightline of 122mm, providing larger glazing areas without compromising performance. Thermal U-Values of 1.4 W/m²K (double glazed) and 1.1 W/m²K (triple glazed) assist with meeting the latest energy efficiency requirements.

Other key design features include a flush pop-out handle and contemporary traffic door handles. A new floating corner offers a true inside-out design, while the 110mm mid rail allows the creation of transoms in the door or solid panels in single and double doors for a uniform aesthetic.

DESIGN FEATURES

- Unique pop-up handle, cycle tested to 25,000 operations for up to 80 years of reliable use
- Integrated cill profile clips onto the outer frame sides, reducing sightlines
- Heavy-duty stainless steel compact rollers as standard
- Full symmetrical frame sightline of 97mm
- 122mm slimline interlock
- Larger glazing area

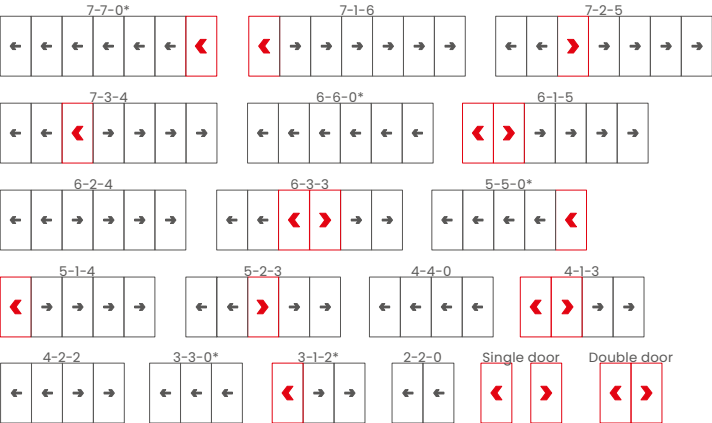
OPTIONS

- Square bead
- Glazing sizing range of 28mm-44mm
- Available in a range of opening configurations, including a floating corner
- Available in single or dual colour polyester powder coating, texture and anodised finishes
- All configurations available open-in and open-out
- 110mm midrail - make single or double doors using transoms or solid panels
- New sub cill range - position onto varying widths of construction using the 225mm, 150mm or 95mm options

SPECIFICATIONS

Performance and accreditations	Open-in	Open-out
U-Value (Double Glazing) (Ug: 1.0 W/m²K)	1.4 W/m²K	1.4 W/m²K
U-Value (Triple Glazing) (Ug: 0.5 W/m²K)	1.1 W/m²K	1.1 W/m²K
Air Permeability (Standard Threshold)	Class 3 (600 Pa)	Class 4 (600 Pa)
Water Tightness (Standard Threshold)	Class 5a (200Pa)	Class E900 (900 Pa)
Wind Resistance	Class B3 (1200Pa)	B3 (1200 Pa)
Security	PAS 24 & SBD	PAS 24 & SBD
System		
Depth	82mm	82mm
Size and weight limits		
Max Leaf Height	2500mm std > 3000mm*	2500mm std > 3000mm*
Max Leaf Width	1200mm	1200mm
Max Vent Weight	150kg	150kg
Glazing		
Glazing Options	Internal Bead	Internal Bead
Glazing Thickness	28mm - 44mm	28mm - 44mm
System Features		
Single Colour	✓	✓
Dual Colour	✓	✓
Textured Finish	✓	✓
Anodised Finish	✓	✓
Multi-Point Locking	✓	✓
Sightline (Head)	97mm	97mm
Sightline (Cill)	97mm	97mm
Sightline (Jamb)	97mm	97mm
Sightline (Interlock)	122mm	122mm

CONFIGURATIONS



\*Opposite handling available on all configurations. For more options, refer to the Technical Manual.

KEY



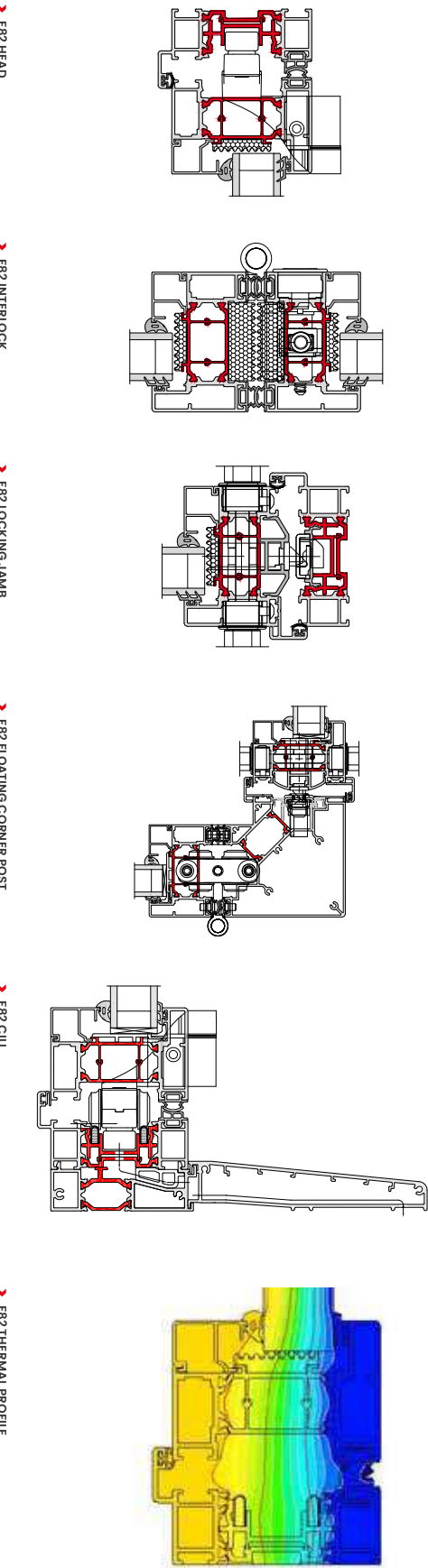
OTHER OPTIONS AVAILABLE



\*The maximum height and panel width for the F82 Folding Sliding Door System are co-dependent and also dictated by the design wind load where the doors are being installed. Based on the site design wind load that the doors are subjected to this will influence the maximum height and width [per panel] to which the doors can be manufactured.

CAD CROSS SECTIONS AND THERMAL PROFILE

Additional details are available on request.





# BSF70 HI Bifold Door



The BSF70 HI Folding Door System gives maximum control over the style and operation of the doors. Multiple panels can be added to accommodate the unique design specifications of the building, with the option to open-in or out as required. The system's narrow profile ensures that maximum glazing is achieved, flooding spaces with natural light.

In addition to the inherent strength of aluminium, the BSF70 HI combines security hinges and locking mechanisms with a unique heavy-duty roller design to provide the security and reliability demanded in high traffic applications. The system also incorporates a pop out T-handle design that allows for square flush stacking panels when doors are fully open.

DESIGN FEATURES

- › Internally beaded with a softline or square detail to all external doors and panels
- › Four stainless steel wheels ensures smooth and consistent operation
- › Unique, flush line pop-out handle that allows maximum door opening and square stacking of panels
- › Tested to PAS 24 and certified under the Secured By Design scheme

OPTIONS

- › Heavy-duty roller options
- › Chamfered and square bead options
- › Low threshold option that can be configured to achieve DDA and Part M compliance
- › Doors and panels can be used in a variety of configurations, style and design
- › All configurations are available in both open-in and open-out options
- › Full range of bespoke hardware available
- › Glazing sizing range of 24mm-40mm
- › Available in single or dual colour polyester powder coating, texture and anodised finishes

SPECIFICATIONS

Performance and accreditations	BSF70 HI	BSF70 HD HI
U-Value (Double Glazing) (Ug: 1.0 W/m²K)	1.4 W/m²K	1.4 W/m²K
U-Value (Triple Glazing) (Ug: 0.7 W/m²K)	1.1 W/m²K	1.1 W/m²K
Air Permeability (Standard Threshold)	Class 4 (600 Pa)	Class 4 (600 Pa)
Water Tightness (Standard Threshold)	Class 9a (600 Pa)	Class 9a (600 Pa)
Wind Resistance	Class AE2400 (2400 Pa)	Class AE2400 (2400 Pa)
Security	PAS 24 & SBD	PAS 24 & SBD
Cycle Testing	50,000	50,000
3rd Party Certification Q-Mark	✓	✓

System

Depth	70mm	70mm
-------	------	------

Configurations

Opening	Open-In & Open-Out	Open-In & Open-Out
---------	--------------------	--------------------

Size and weight limits

Max Leaf Height	2400mm std/3000**mm	2400mm std/3000**mm
Max Leaf Width	1200mm	1200mm
Max Vent Weight	100kg	130kg

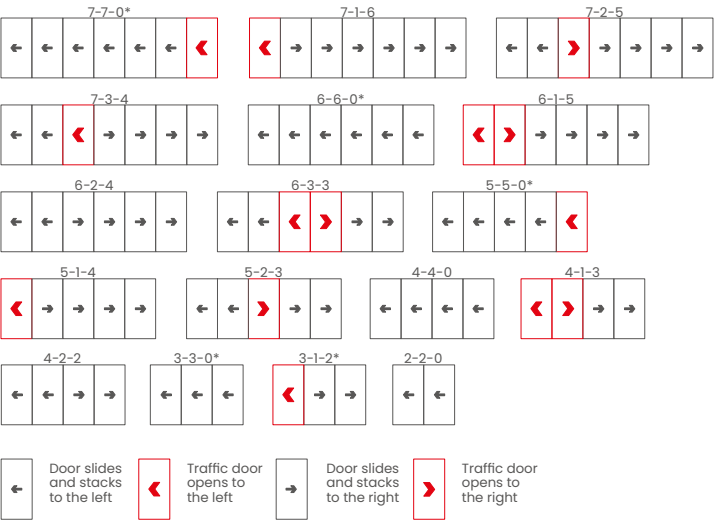
Glazing

Glazing Options	Internal Bead	Internal Bead
Glazing Thickness	24mm-40mm	24mm-40mm

System Features

Single Colour	✓	✓
Dual Colour	✓	✓
Textured Finish	✓	✓
Anodised Finish	✓	✓
Multi-Point Locking	✓	✓
Sightline (Head)	110mm	110mm
Sightline (Cill)	130mm	130mm
Sightline (Jamb)	110mm	110mm
Sightline (Meeting Stile)	140mm	140mm

CONFIGURATIONS



OTHER OPTIONS AVAILABLE



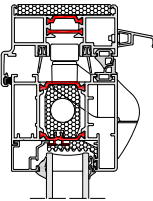
\*Opposite handling available on all configurations. For more options, refer to the Technical Manual.

\*\*The maximum height and panel width for the BSF70 HI Folding Sliding Door System are co-dependent and dictated by hardware limitation and the design wind load where the doors are being installed. Based on the site design wind load that the doors are subjected to this will influence the maximum height and width [per panel] to which the doors can be manufactured.

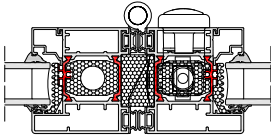
CAD CROSS SECTIONS AND THERMAL PROFILE

Additional details are available on request.

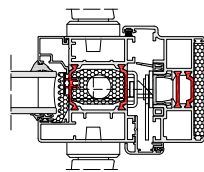
BSF70 HI HEAD



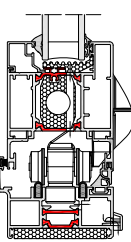
BSF70 HI INTERLOCK



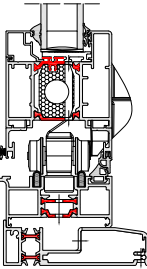
BSF70 HI LOCKING JAMB



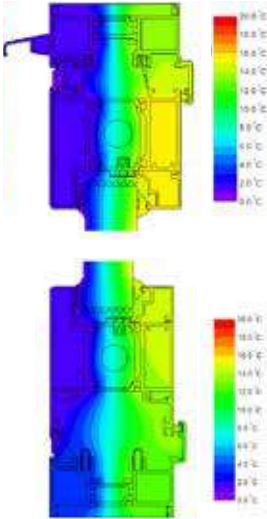
BSF70 HI CILL



BSF70 HI SUBCILL



BSF70 HI THERMAL SIMULATION





# BSF70 Bifold Door



An intelligent combination of form and function, our highly versatile and market-leading Bi-fold sliding door system gives you maximum control over the style and operation of the doors.

Multiple panels can be added to accommodate the design specifications of your building, with the option to open in or out as required.

The system also boasts a unique flush line pop-out handle that allows for square flush stacking panels when doors are fully open.

DESIGN FEATURES

- › Certified under the Secured By Design scheme
- › Tested to PAS 24
- › Unique, pop-out handle that allows for maximum door opening and panels to stack square
- › Four stainless steel rollers to ensure smooth and consistent operation

OPTIONS

- › Chamfered and square bead options
- › Glazing 24mm – 40mm
- › Available in a range of opening configurations
- › Available with heavy duty rollers; BSF70 HD
- › Available in a range of single or dual colour and anodised finishes
- › Low threshold 15mm step height
- › All configurations available open in and open out
- › Chamfered and square based options
- › Shootbolts top and bottom of the interlock for enhanced security
- › Dedicated bottom bogey guide for consistent operation and enhanced security
- › Double track threshold allowing greater stability

SPECIFICATIONS

Performance* and accreditations	BSF70	BSF70 HD
U-Value (Double Glazing) (Ug: 1.0 W/m²K)	1.6 W/m²K	1.6 W/m²K
U-Value (Triple Glazing) (Ug: 0.7 W/m²K)	1.4 W/m²K	1.4 W/m²K
Air Permeability (Standard Threshold)	Class 4 (600 Pa)	Class 4 (600 Pa)
Water Tightness (Standard Threshold)	Class 9a (600 Pa)	Class 9a (600 Pa)
Wind Resistance	Class AE2400 (2400 Pa)	Class AE2400 (2400 Pa)
Security	PAS 24 & SBD	PAS 24 & SBD
Cycle Testing	50,000	50,000
3rd Party Certification Q-Mark	✓	✓

System

Depth	70mm	70mm
-------	------	------

Configurations

Opening	Open-In & Open-Out	Open-In & Open-Out
---------	--------------------	--------------------

Size and weight limits

Max Leaf Height	2400mm std / 3000mm	2400mm std / 3000mm
Max Leaf Width	1200mm	1200mm
Max Vent Weight	100kg	130kg

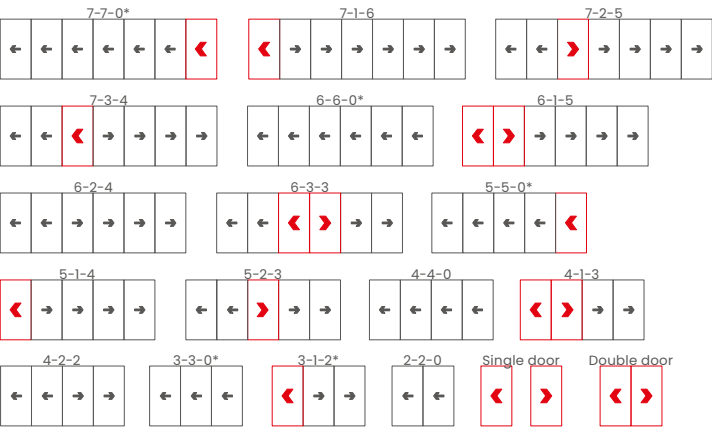
Glazing

Glazing Options	Internal Bead	Internal Bead
Glazing Thickness	24mm-40mm	24mm-40mm

System Features

Single Colour	✓	✓
Dual Colour	✓	✓
Textured Finish	✓	✓
Anodised Finish	✓	✓
Multi-Point Locking	✓	✓
Sightline (Head)	110mm	110mm
Sightline (Cill)	130mm	130mm
Sightline (Jamb)	110mm	110mm
Sightline (Meeting Stile)	140mm	140mm

CONFIGURATIONS



\*Opposite handling available on all configurations. For more options, refer to the Technical Manual.

KEY



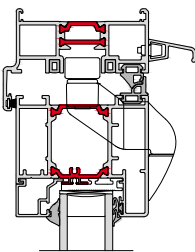
OTHER OPTIONS AVAILABLE



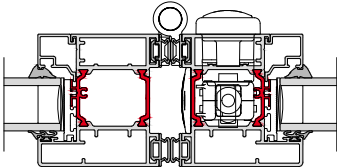
CAD CROSS SECTIONS AND THERMAL PROFILE

Additional details are available on request.

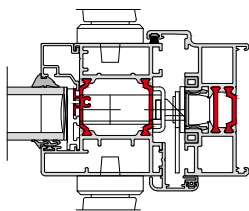
› BSF70 HEAD



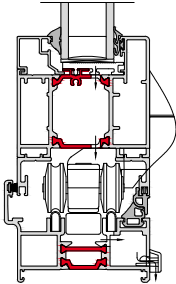
› BSF70 INTERLOCK



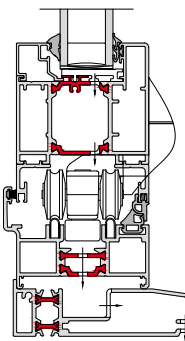
› BSF70 LOCKING JAMB



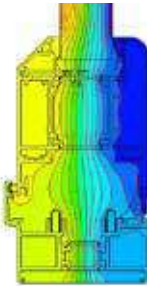
› BSF70 FACE DRAINAGE



› BSF70 CILL AND SUBCILL



› BSF70 THERMAL PROFILE



\* Performance data based on CEN size for Building Regulations. For full test performance details please contact Technical Services. Aluk recommends checking all system performance for any scheme prior to use.



# Swimming in compliments

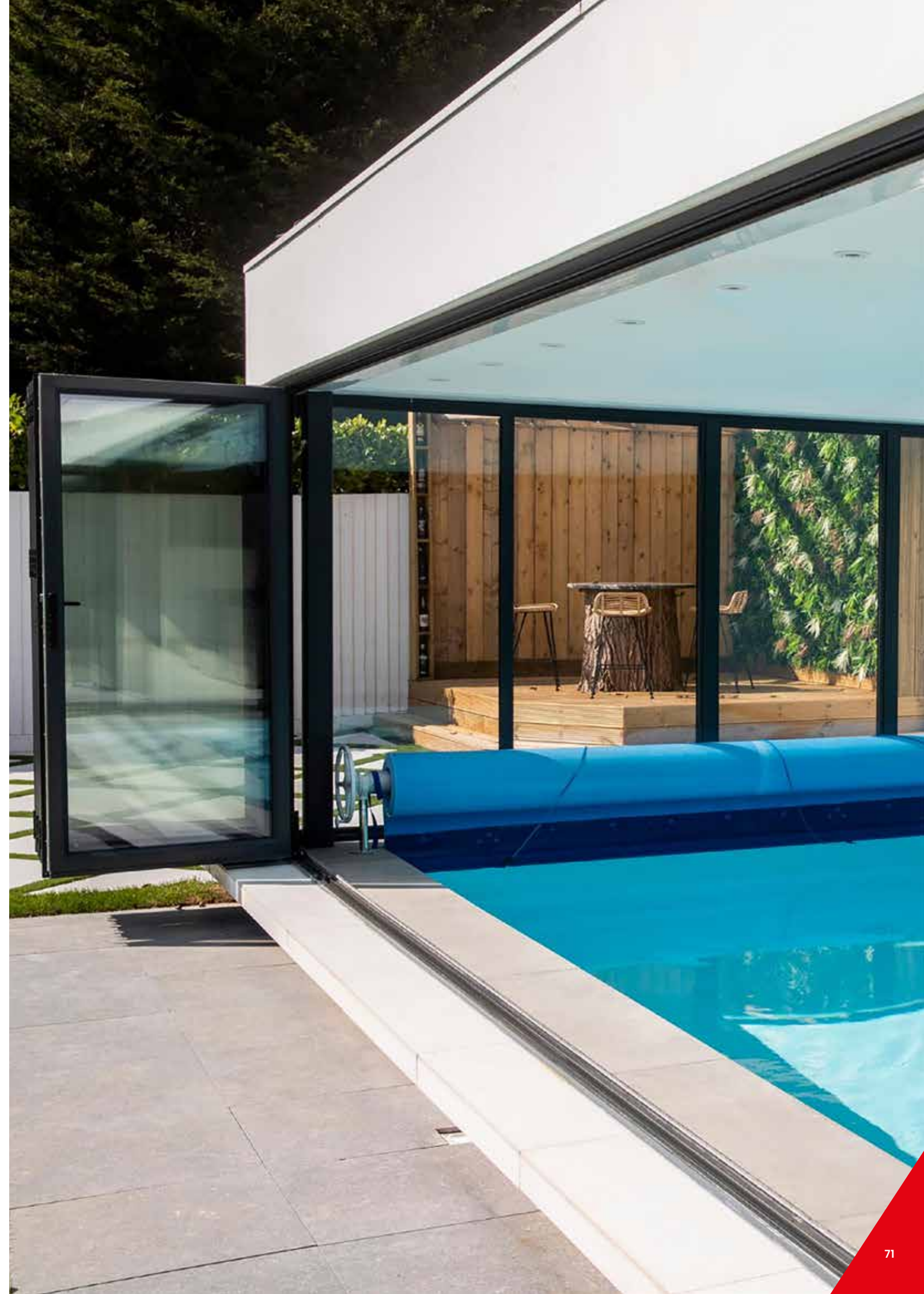
In documenting the contemporary renovation and redevelopment of their 1910 5-bedroom property in South Wales, the owners of @ourgranddesign1 have already attracted more than 17500 followers.

While the whole project is impressive, the most likes on the account so far have been on the images of the stunning garden and pool room, surrounded on two complete sides by AluK's iconic BSF70 bi-folds.

The Californian original, which inspired the design, was open on two sides with a cantilevered roof, but the Welsh owners sensibly opted for bi-folding doors on their version – to cope with the vagaries of the UK weather.

Two five-panel BSF70 bi-folds installed on the front of the garden room open out from the centre, while the pool area features a single, nine-panel bi-fold which opens up one way from right to left to create a seamless link between inside and out. There are also two further five-panel BSF70 bi-folds installed at the end of the building and working as a divider between the two separate zones.

The garden and pool room sits at the end of the property's half acre garden and there is even a three metre AluK 58BW fixed light window installed in the newly extended open plan kitchen to frame the view of it.





**T: 01291 639 739**  
**E: [info.uk@aluk.com](mailto:info.uk@aluk.com)**

Registered Office:  
AluK (GB) Ltd  
Newhouse Farm Ind Est  
Chepstow  
NP16 6UD

London Office:  
AluK Design Studio  
5-11 Worship Street  
London  
EC2A 2BH

Registered Number:  
02881320